

Installation guide

DPMP-02/03 mounting platform for ACS-AP-X control panels

Delivery check

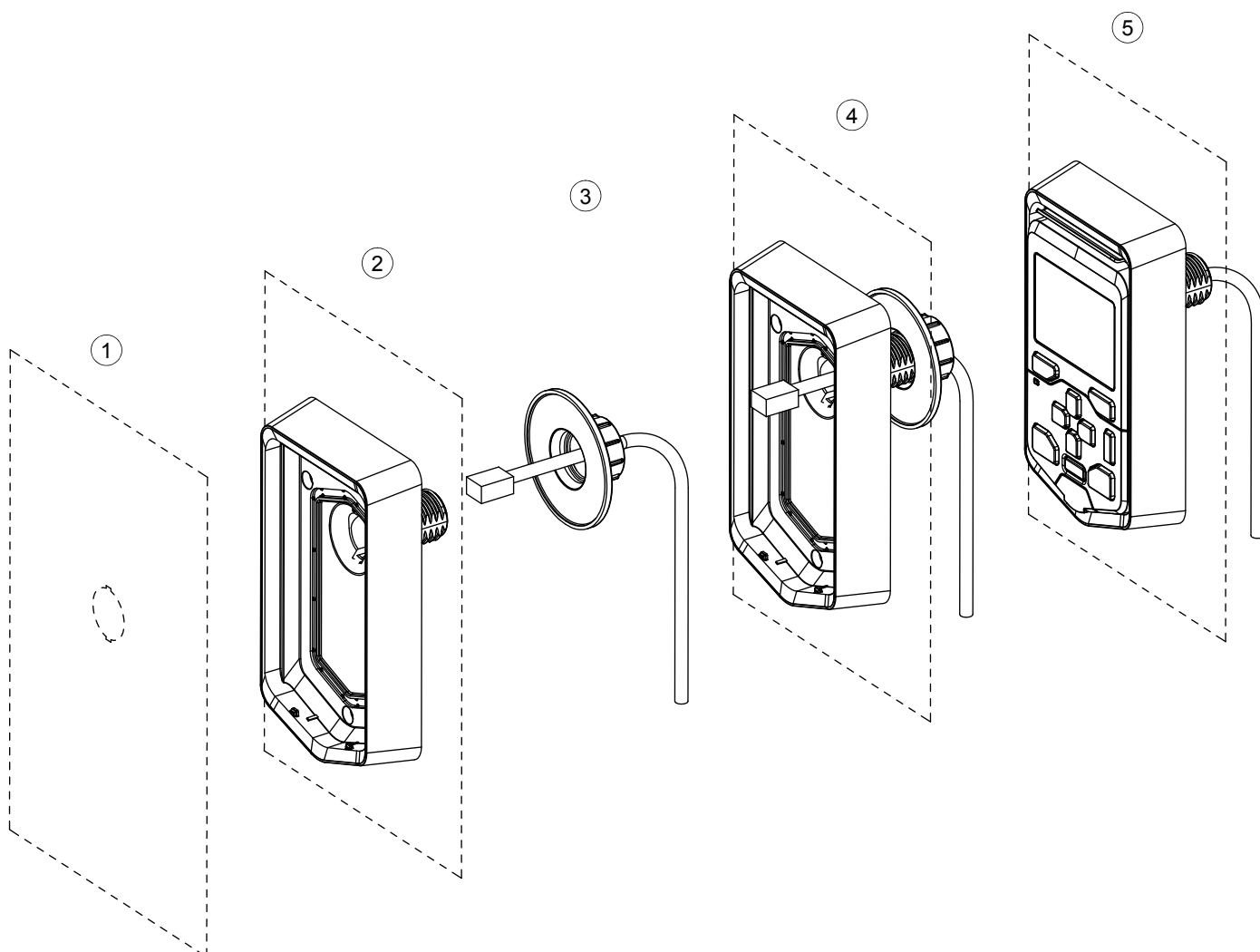
Contents of the package: mounting platform, nut, control panel cable. Check that all items are present and there are no signs of damage.

Technical data

Degree of protection: IP65. Control cable length: 3 m.

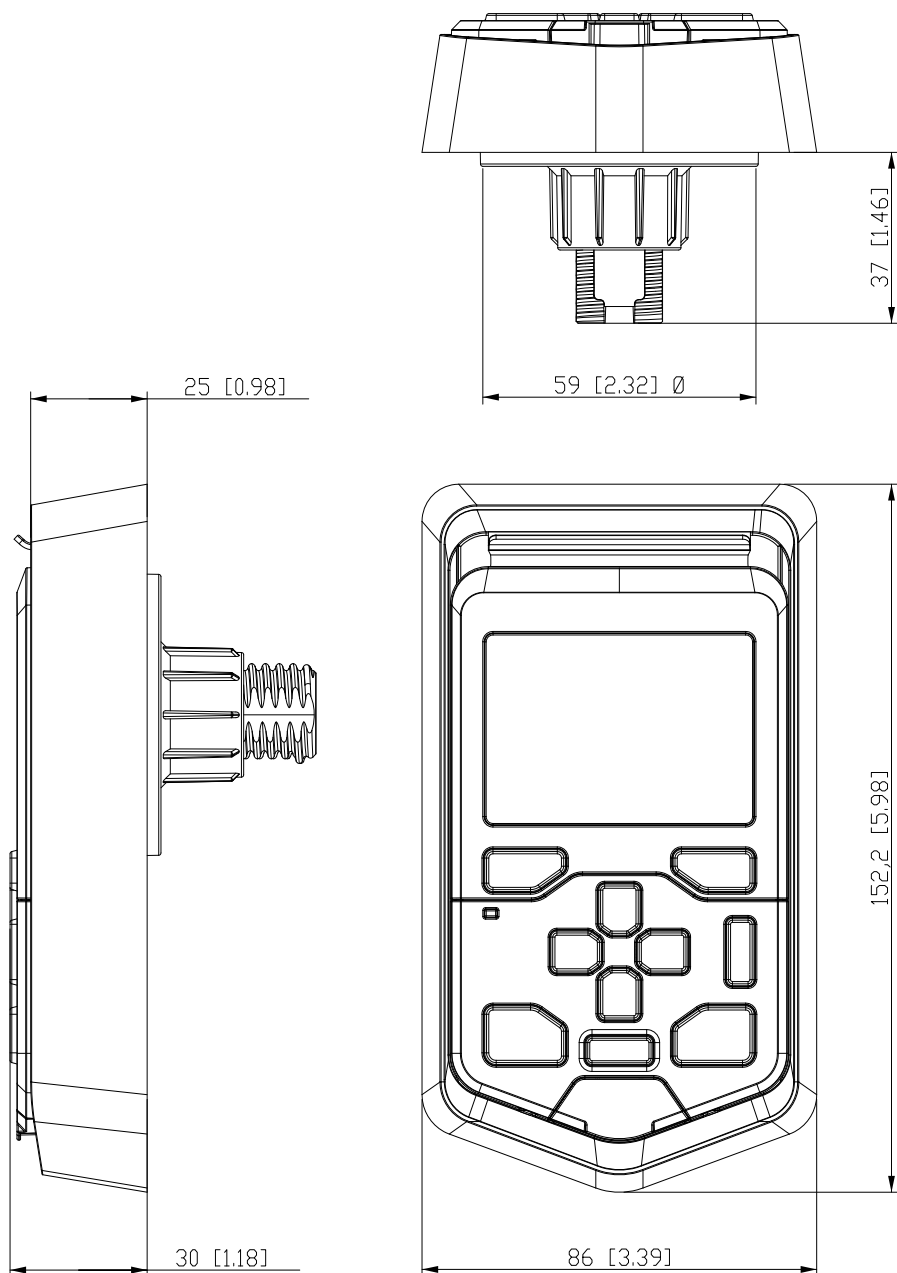
Installation instructions

1. Cut a hole in the cabinet door. See the [Dimension drawings](#) on next page.
2. Remove the locking nut and insert the mounting platform into the hole.
3. Put the control panel cable through the locking nut and the mounting panel hole.
4. Tighten the locking nut.
5. Attach the control panel.

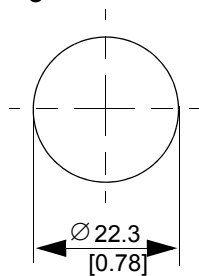


Dimension drawings

Cabinet door thickness: 1.5...30 mm (0.059...1.18 in)



Cutting hole diameter in the cabinet door:



<http://www.abb.com/drives>

<http://www.abb.com/solar>

<http://www.abb.com/windpower>