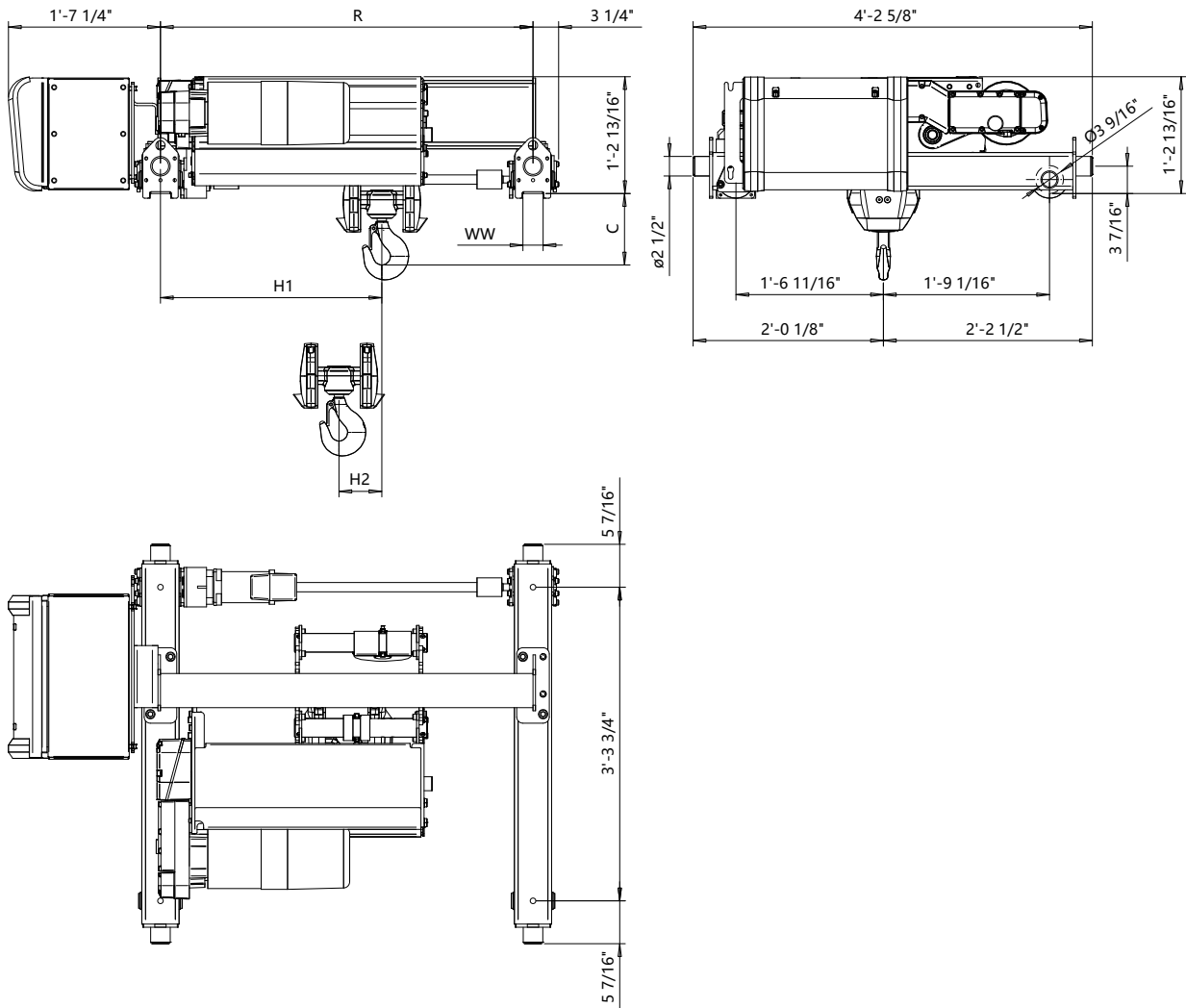


Double Girder - Medium, 4 PART SINGLE  
Hoist type:  
DHR5 4/1..EZ

US-60Hz



Headroom C-Dimension					Notes
Case 1 (inch)	Case 2 (inch)	Case 3 (inch)	Case 4 (inch)	Case 5 (inch)	Case 1: Steel rope without HS22 limit switch
9 1/16"	16 1/8"	18 1/2"	11 11/16"	15 9/16"	Case 2: Steel rope with HS22 limit switch
					Case 3: Steel rope with HS22 L.S. & Rope angle sensor
					Case 4: Synthetic rope and HS22 limit switch
					Case 5: Synthetic rope with HS22 L.S. & Rope angle sensor
					HS22 limit switch mandatory with synthetic rope

HOL	Length	H1	H2	WW min	WW max	R min	R max	Estimated Weight *	
(ft-in)	code							(lb)	(lb)
21'-4"	B	1'-9 1/2"	3 1/4"	2"	2 3/4"	2'-11 7/16"	6'-6 3/4"	720	800
29'-6"	C	2'-3 3/8"	5 5/16"	2"	2 3/4"	3'-11 1/4"	6'-6 3/4"	780	840
39'-4"	D	2'-10 1/2"	7 1/8"	2"	2 3/4"	4'-7 1/8"	6'-6 3/4"	840	880

Load (ton)	Class ASME
2	H4+
3	H4+
4	H4+
5	H4
6	H3

\* Estimated weight with P3 hoist motor

Standard rail gauges are 2'-11 7/16", 3'-11 1/4", 4'-7 1/8", 5'-6 15/16", 6'-6 3/4".

Dim H1 listed is based on R min.

Rev	Explanation	Date	Revised by	Checked by
	This document is the absolute property of Demag Cranes & Components Corp. This document must not be copied without the written permission of Demag Cranes & Components Corp. The contents thereof must not be disclosed to a third party nor be used for any unauthorized purpose. Contravention will be prosecuted.			

Design	Chd	Appd	Ref Drawing	R5-M-04
Date	DOUBLE GIRDER HOIST			
SLEOMECE Owner Dept	4 PART SINGLE			
DEMAG				1:10
R5041_M				Folder
R5-M-04_1				Issue
2025-05-21				1

R5-M-04\_1

2025-05-21

R5-M-04