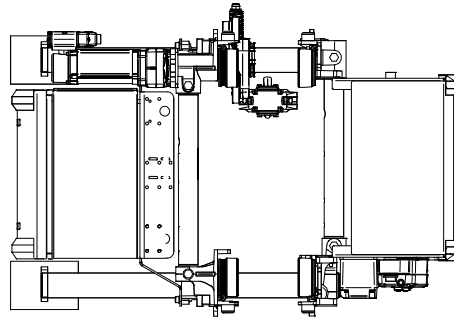
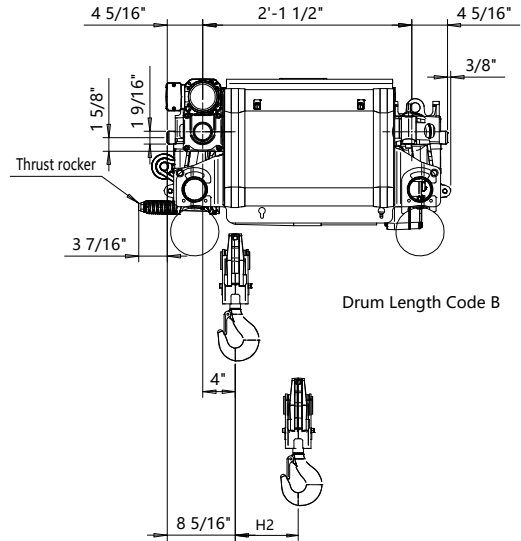
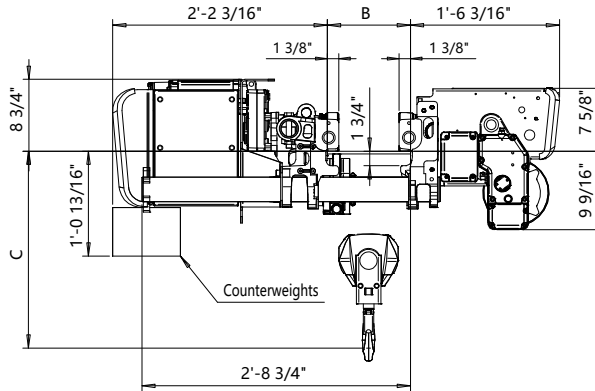
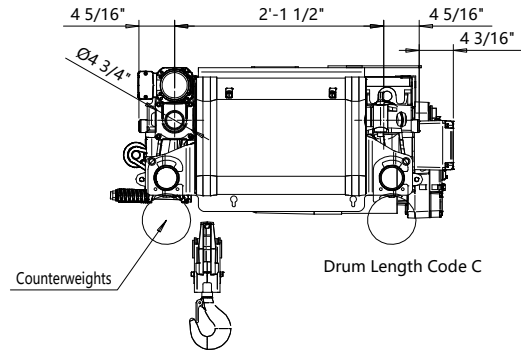


Low Headroom, 2 PART SINGLE  
Hoist type:  
DHR3 2/1..EK

US-60Hz



Drum Length Code B



Drum Length Code C

Balancing Method is either a thrust rocker or counterweights as needed.

Flange Width	Balancing Method	Maximum Flange Thickness
3.94" - 11.75"	Counterweight	1 9/16"
3.94" - 11.75"	Thrust Rocker	1 1/4"
11.81" - 24"	None	1 9/16"

Flange Width	Headroom C-Dimension					Notes
B-dimension	Case 1	Case 2	Case 3	Case 4	Case 5	
[inch]	[inch]	[inch]	[inch]	[inch]	[inch]	
3.94 - 5.87	17 1/8"	25"	27 3/8"	21 1/16"	25 1/4"	Case 1: Steel rope without HS22 limit switch
5.91 - 7.83	16 5/16"	24 5/8"	27"	20 3/4"	24 7/8"	Case 2: Steel rope with HS22 limit switch
7.87 - 9.84	16 1/2"	24"	26 9/16"	19 7/8"	24 1/4"	Case 3: Steel rope with HS22 L.S. & Rope angle sensor
9.88 - 12.8	18 1/2"	23 1/2"	26"	19 1/8"	23 5/8"	Case 4: Synthetic rope with HS22 limit switch
12.83 - 13.78	19 1/8"	22 5/8"	25 1/4"	19 1/8"	22 5/8"	Case 5: Synthetic rope with HS22 L.S. & Rope angle sensor
13.82 - 15.75	20 1/2"	22 1/16"	24 7/8"	20 1/2"	22 7/16"	HS22 limit switch mandatory with synthetic rope
15.79 - 17.72	21 7/8"	21 7/8"	24"	20 7/8"	21 7/8"	
17.76 - 19.69	23 1/16"	23"	23 1/4"	23 1/16"	23 1/16"	
19.72 - 21.65	24 1/2"	24 1/2"	24 1/2"	24 1/2"	24 1/2"	
21.69 - 24	26"	26"	26"	26"	26"	

HOL	Length	H2	Estimated Weight
(ft-in)	code	(inch)	(lb)
42'-8"	B	7 5/8"	480
58'-0"	C	10 5/8"	510

Load	Class
(ton)	ASME
1	H4+
1 1/4	H4+
1 1/2	H4

Rev Explanation Date Revised by Checked by

This document is the absolute property of Demag Crane & Components Corp. This document must not be copied without the written permission of Demag Crane & Components Corp. The contents thereof must not be disclosed to a third party nor be used for any unauthorized purpose. Contravention will be prosecuted.

Design	Chd	Appd	Ref Drawing	R3-L-02
Date	LOW HEADROOM HOIST			
SLEIGHMECE Owner Dept	2 PART SINGLE			
DEMAG				1:10
R3021_L				Folder
				Issue
				1