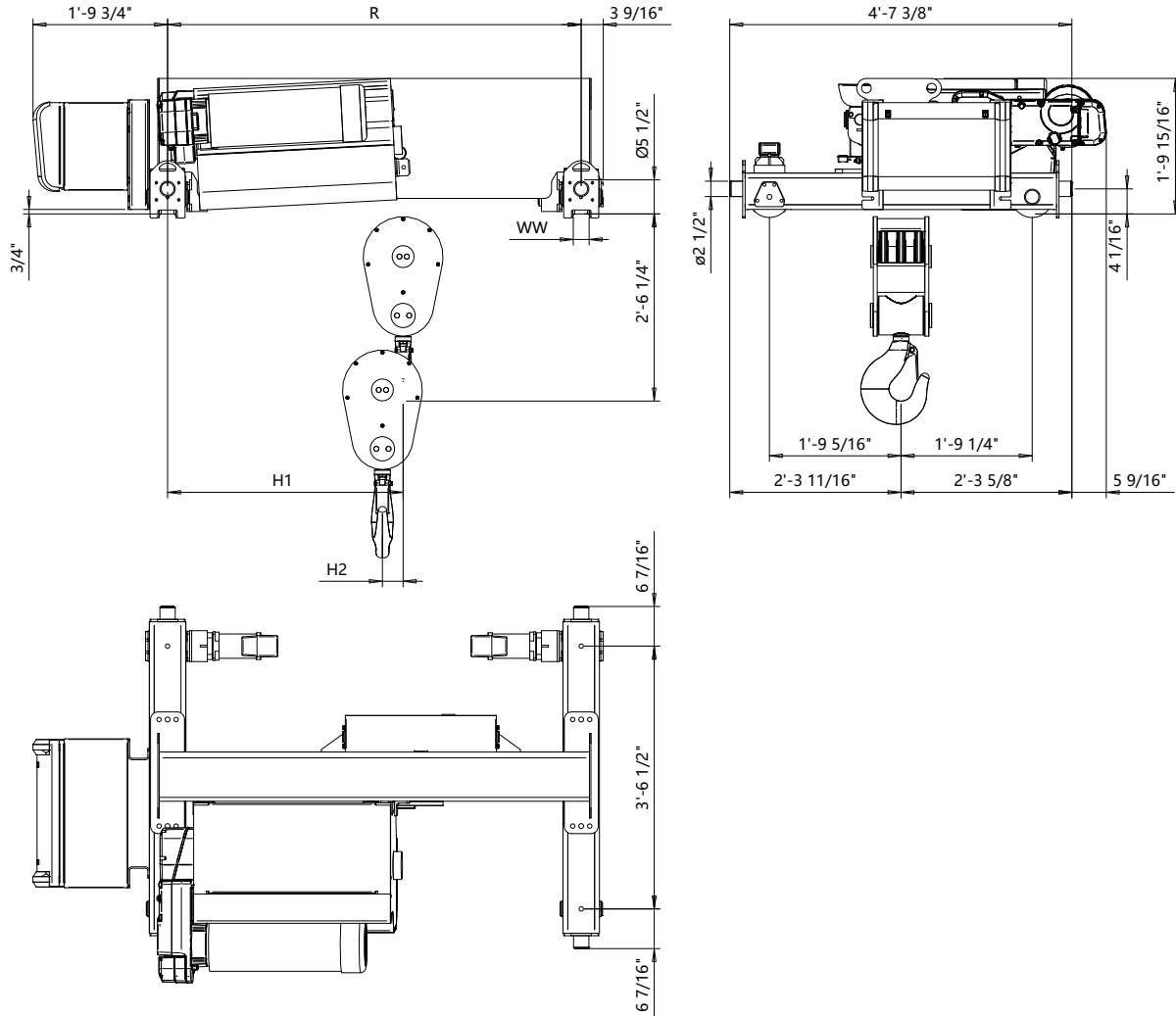


Double Girder - Medium, 6 PART SINGLE  
Hoist type:  
DHR10 6/1..EZ

US-60Hz



Headroom C-Dimension					Notes
Case 1	Case 2	Case 3	Case 4	Case 5	Case 1: Steel rope without HS22 limit switch
(inch)	(inch)	(inch)	(inch)	(inch)	Case 2: Steel rope with HS22 limit switch
2'-6 1/4"	2'-6 1/4"	2'-6 1/4"	2'-6 1/4"	2'-6 1/4"	Case 3: Steel rope with HS22 L.S. & Rope angle sensor
					Case 4: Synthetic rope and HS22 limit switch
					Case 5: Synthetic rope with HS22 L.S. & Rope angle sensor
					HS22 limit switch mandatory with synthetic rope

								Estimated Weight *	
HOL	Length	H1	H2	WW min	WW max	R min	R max	R min	R max
(ft-in)	code							(lb)	(lb)
19'-8"	C	3'-2 1/8"	3 3/8"	2 1/8"	3 5/16"	5'-6 15/16"	8'-10 5/16"	2050	2300
26'-2"	D	3'-8"	4 1/2"	2 1/8"	3 5/16"	6'-6 3/4"	8'-10 5/16"	2200	2360
32'-9"	E	4'-3 3/4"	5 5/8"	2 1/8"	3 5/16"	7'-10 1/2"	8'-10 5/16"	2380	2450
39'-4"	F	4'-9 11/16"	6 7/8"	2 1/8"	3 5/16"	8'-10 5/16"	8'-10 5/16"	2520	2520

Load	Class
(ton)	ASME
12	H4+
15	H4

\* Estimated weight with P5 hoist motor

Standard rail gauges are 5'-6 15/16", 6'-6 3/4", 7'-10 1/2", 8'-10 5/16".

Dim H1 listed is based on R min.

Rev Explanation Date Revised by Checked by

This document is the absolute property of Demag Crane & Components Corp. This document must not be copied without the written permission of Demag Crane & Components Corp.

The contents thereof must not be disclosed to a third party nor be used for any unauthorized purpose. Contravention will be prosecuted.

Design	Chd	Appd	Ref Drawing	R10-M-06
Date	DOUBLE GIRDER HOIST			
SLEIGHMECE Owner Dept	6 PART SINGLE			
DEMAG				1:10
R10061_M				Folder
				Issue
				2