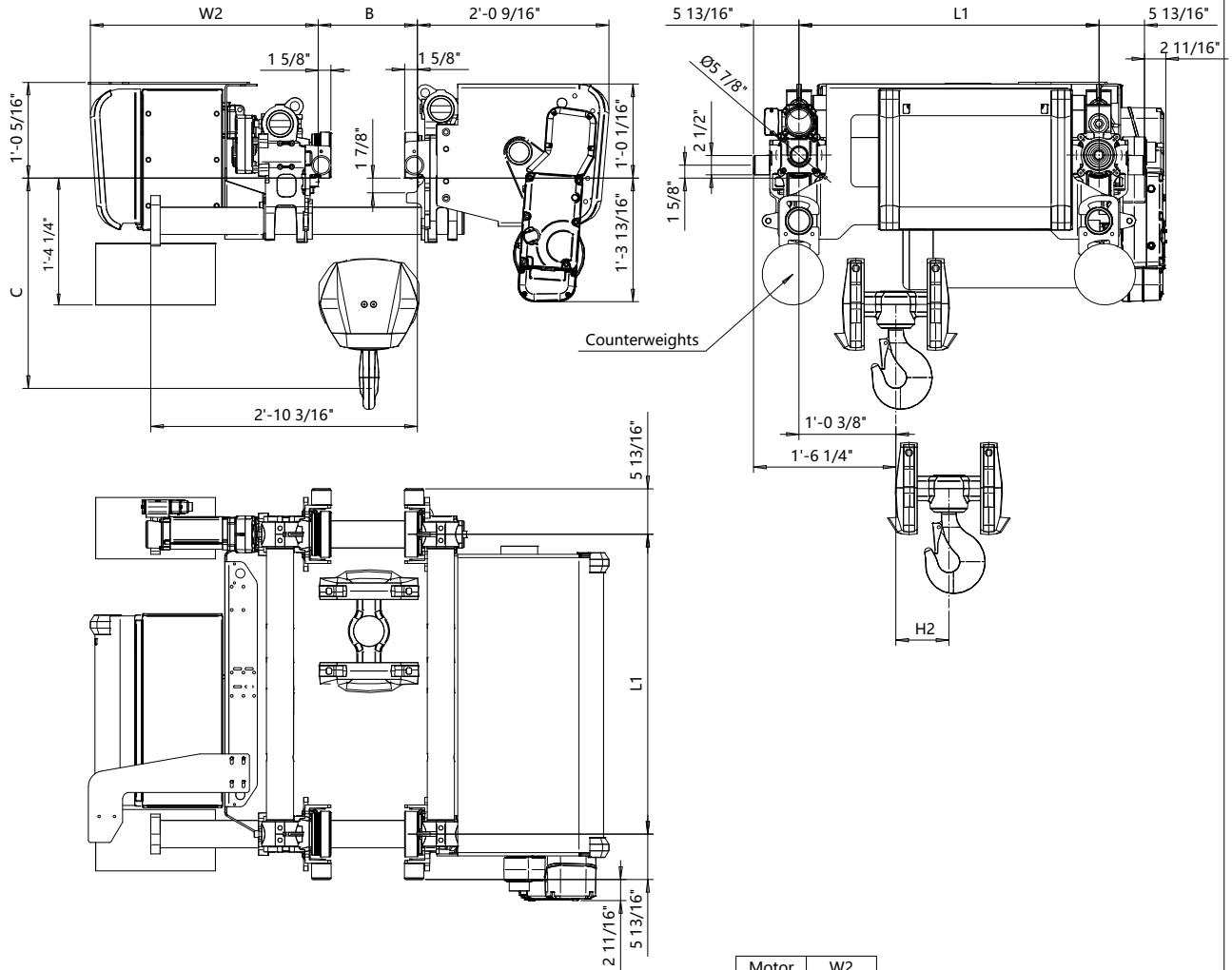


Low Headroom, 4 PART SINGLE
Hoist type:
DHR10 4/1..EK

US-60Hz



Balancing Method is either a thrust rocker or counterweights as needed.

Flange Width	Balancing Method	Maximum Flange Thickness
3.94" - 11.75"	Counterweight only	1 9/16"
11.81" - 24"	Thrust Rocker	1 1/4"
11.81" - 24"	Counterweight	1 9/16"

Motor Code	W2 (inch)
P5	29 1/2"
S5	29 1/2"
S6	29 1/2"
W5	33 1/4"

Flange Width B-dimension [inch]	Headroom C-Dimension					Notes
	Case 1 [inch]	Case 2 [inch]	Case 3 [inch]	Case 4 [inch]	Case 5 [inch]	
4.72 - 7.83	20 1/4"	27 3/8"	29 9/16"	24 5/8"	26 3/4"	Case 1: Steel rope without HS22 limit switch
7.87 - 12.8	19 3/4"	27"	29"	24 1/4"	26 3/8"	Case 2: Steel rope with HS22 limit switch
12.83 - 13.78	21 5/8"	26 3/16"	28 9/16"	23 1/4"	25 5/8"	Case 3: Steel rope with HS22 L.S. & Rope angle sensor
13.82 - 15.75	25 3/4"	26"	28 3/8"	26"	26"	Case 4: Synthetic rope with HS22 limit switch
15.79 - 19.69	33 5/8"	33 5/8"	33 5/8"	34 1/2"	34 1/2"	Case 5: Synthetic rope with HS22 L.S. & Rope angle sensor
19.72 - 24	43"	43"	43"	43 1/2"	43 1/2"	HS22 limit switch mandatory with synthetic rope

HOL (ft-in)	Length code	L1 (inch)	H2 (inch)	Estimated Weight (lb)
29'-6"	C	31 5/8"	3 5/8"	1240
39'-4"	D	38 1/2"	5 7/16"	1350
42'-2"	E	45 13/16"	7 1/4"	1460

Load (ton)	Class ASME
6	H4+
7 1/2	H4+
10	H4

Rev Explanation Date Revised by Checked by
This document is the absolute property of Demag Crane & Components Corp. This document must not be copied without the written permission of Demag Crane & Components Corp. The contents thereof must not be disclosed to a third party nor be used for any unauthorized purpose. Contravention will be prosecuted.

Design	Chd	Appd	Ref Drawing	R10-L-04
Date LOW HEADROOM HOIST				
SLEOMECE Owner Dept 4 PART SINGLE				
1:10 Folder				
DEMAC R10041_L				
Issue 1				