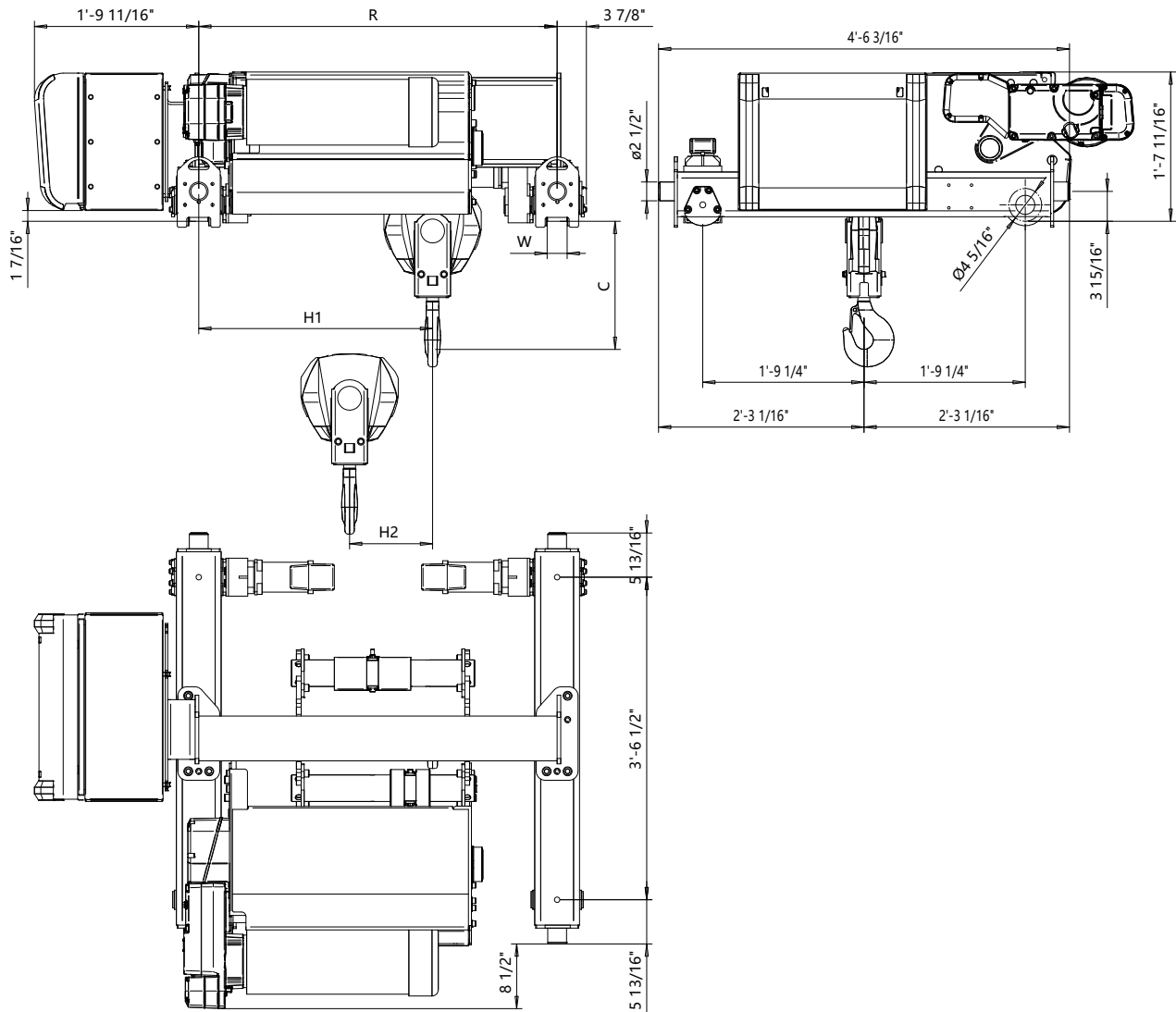


Double Girder - Medium, 2 PART SINGLE  
Hoist type:  
DHR10 2/1..EZ

US-60Hz



Headroom C-Dimension					Notes
Case 1 (inch)	Case 2 (inch)	Case 3 (inch)	Case 4 (inch)	Case 5 (inch)	Case 1: Steel rope without HS22 limit switch
16 15/16"	16 15/16"	16 15/16"	16 15/16"	16 15/16"	Case 2: Steel rope with HS22 limit switch
					Case 3: Steel rope with HS22 L.S. & Rope angle sensor
					Case 4: Synthetic rope and HS22 limit switch
					Case 5: Synthetic rope with HS22 L.S. & Rope angle sensor
					HS22 limit switch mandatory with synthetic rope

HOL (ft-in)	Length code	H1	H2	WW min	WW max	R min	R max	Estimated Weight *	
59'-0"	C	2'-6 3/4"	11"	2 1/16"	3 1/4"	3'-11 1/4"	6'-6 3/4"	R min (lb)	R max (lb)
78'-8"	D	3'-1 3/4"	14 1/2"	2 1/16"	3 1/4"	4'-7 1/8"	6'-6 3/4"	1510	1585
98'-5"	E	3'-9"	17 1/4"	2 1/16"	3 1/4"	5'-6 15/16"	6'-6 3/4"	1583	1640
118'-1"	F	4'-4 5/16"	22 1/4"	2 1/16"	3 1/4"	6'-6 3/4"	6'-6 3/4"	1671	1700
								1757	1757

Load (ton)	Class ASME
4	H4+
5	H4
6	H3

\* Estimated weight with P5 hoist motor  
Standard rail gauges are 3'-11 1/4", 4'-7 1/8", 5'-6 15/16", 6'-6 3/4".  
Dim H1 listed is based on R min.

Rev	Explanation	Date	Reviewed by	Checked by

This document is the absolute property of Demag Cranes & Components Corp. This document must not be copied without the written permission of Demag Cranes & Components Corp.  
The contents thereof must not be disclosed to a third party nor be used for any unauthorized purpose. Contravention will be prosecuted.

Design	Chd	Appd	Ref Drawing	R10-M-02
Date	DOUBLE GIRDER HOIST			
SLEQMECE Owner Dept	2 PART SINGLE			
DEMAG	R10021_M			
				1:10
				Folder
				Issue
				1