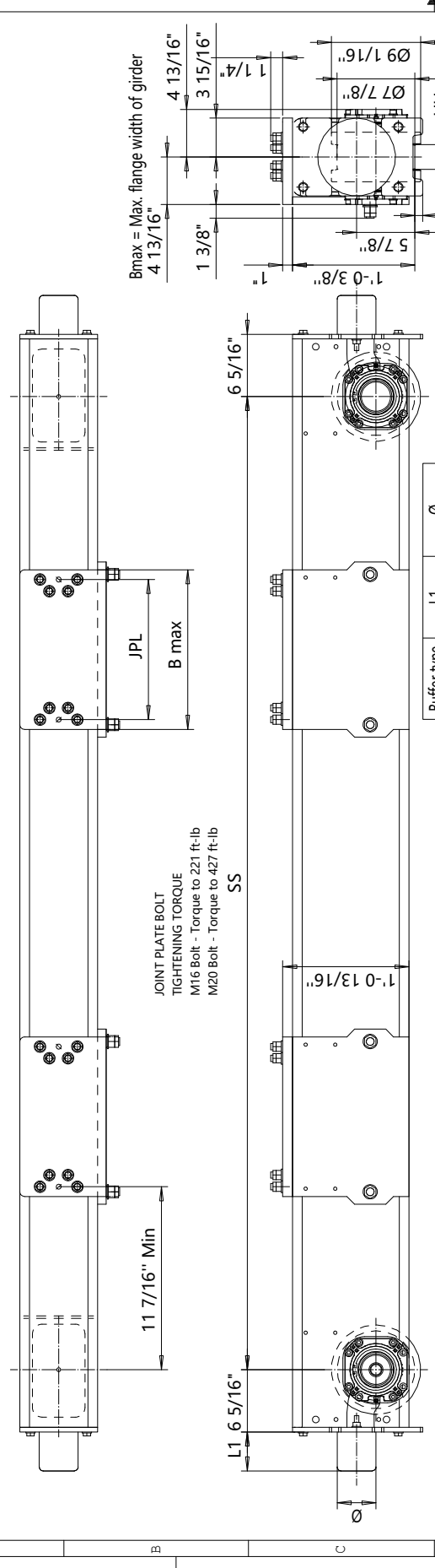


DFO20 END TRUCK SIDE JOINT PLATE TYPE R



JOINT PLATE BOLT TIGHTENING TORQUE
 M16 Bolt - Torque to 221 ft-lb
 M20 Bolt - Torque to 427 ft-lb
 SS

Product Code example
DFO20-2574-R40840C0000-N

- DFO20 - Wheelbase
- 2574 - Max dyn whl load, (kip)
- R40840C - Perm dyn whl load, (kip)
- 0000 - ASCE 60#
- N - ASCE 85#
- N=standard, E=Special primer paint, color code (not in use with RTN20)
- Buffer type
- Joint plate distance (pin to pin, with double DG girder) (driving wheel to pin with asymmetrical single SG girder)
- Joint plate code
- = IWD, D = 2WD (Number of driving wheels/end carriage)
- Wheel groove = UU
- Wheel base = SS
- = std, C = asymmetrical joint
- Type of end carriage

Wheelbase code	SS	Max dyn whl load, (kip)	DG	29.7	29.7	29.7	25.2	16.88	11.93	13.28	19.8	19.8	19.8	22	22	22	22	22	22	1020	1114
16	5'-3"	29.7	29.7	29.7	25.2	16.88	11.93	13.28	19.8	19.8	19.8	22	22	22	22	22	22	22	1020	1114	
20	6'-6 3/4"	29.7	29.7	29.7	25.2	16.88	11.93	13.28	19.8	19.8	19.8	22	22	22	22	22	22	22	1035	1035	
25	8'-2 7/16"	29.7	29.7	29.7	25.2	16.88	11.93	13.28	19.8	19.8	19.8	22	22	22	22	22	22	22	898	898	
32	10'-4"	29.7	29.7	29.7	25.2	16.88	11.93	13.28	19.8	19.8	19.8	22	22	22	22	22	22	22	795	795	
40	13'-1 1/2"	29.7	29.7	29.7	25.2	16.88	11.93	13.28	19.8	19.8	19.8	22	22	22	22	22	22	22	714	714	
45	14'-9 3/16"	29.7	29.7	29.7	25.2	16.88	11.93	13.28	19.8	19.8	19.8	22	22	22	22	22	22	22	650	650	

Buffer type	L1	Ø
A	2 3/16"	2 1/2"
B	2 11/16"	3 3/16"
C	3 5/16"	3 15/16"
D	4 1/8"	4 15/16"
K	3 3/16"	3 3/16"
G	3 15/16"	3 15/16"
E	5 15/16"	3 15/16"
F	7 1/2"	4 15/16"
H	6 5/16"	6 5/16"
I	7 7/8"	7 7/8"
M	4 15/16"	4 15/16"
P	9 7/16"	6 5/16"
S	11 13/16"	7 7/8"

Joint plate	Min. Wheelbase	JPL	B max
plate	Trolley gage = 47.25"		
R3	8'-2 7/16"; DG	9.84"	11 13/16"
R4	8'-2 7/16"; DG	14.17"	16 1/8"
R5	8'-2 7/16"; DG	18.5"	20 1/2"
R6	8'-2 7/16"; DG	22.83"	24 13/16"

Specification

RTVPH Child

END TRUCK

OUTLINE DRAWING

DFO20-R

DFO20 END TRUCK SIDE JOINT

DEMAG

2008-05-23

08/2025