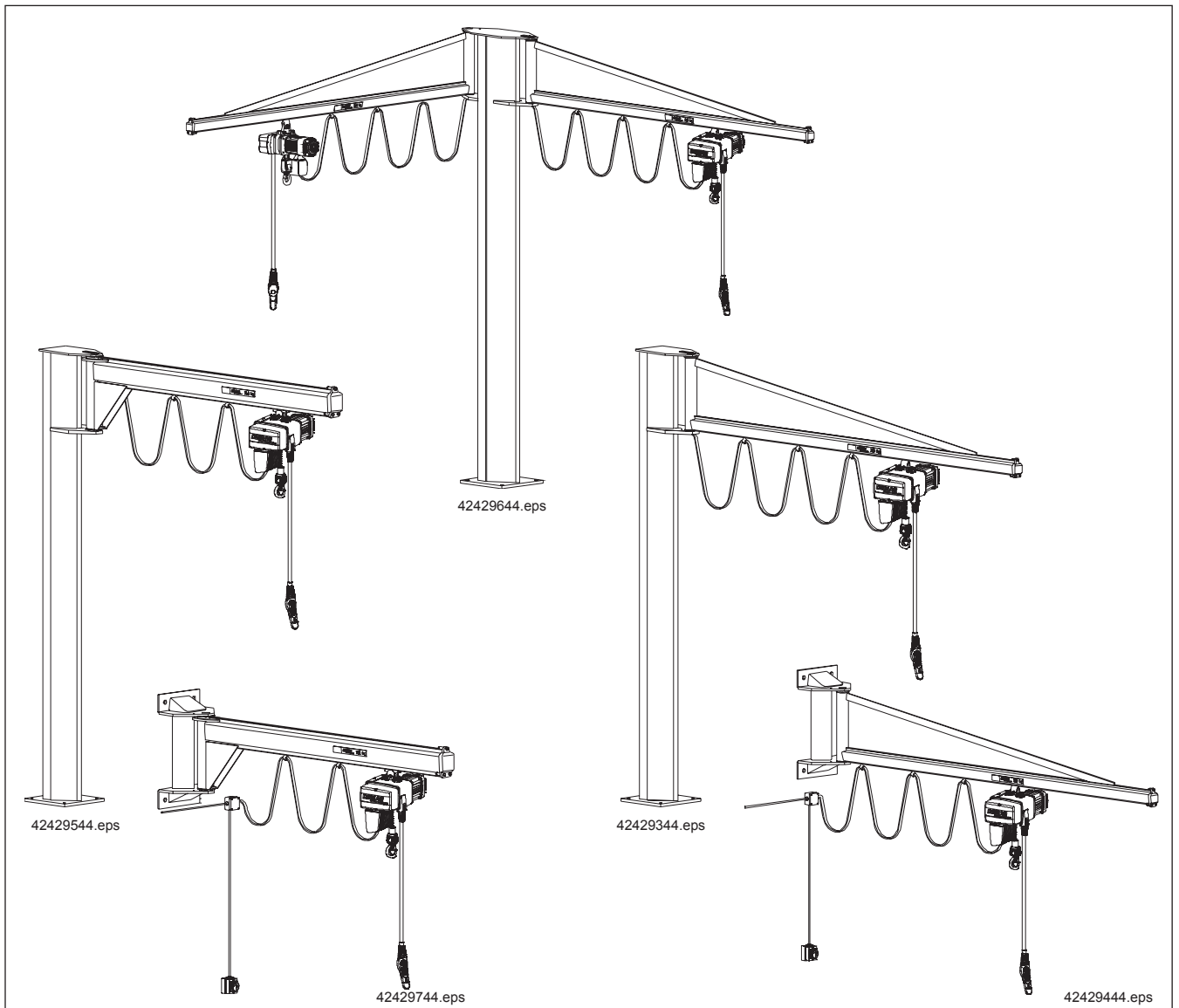


# SSK KBK pillar-mounted slewing jib cranes

# WSK KBK wall-mounted slewing jib cranes

Technical data



## Manufacturer

### Demag Cranes & Components GmbH

Handling Technology  
P.O. Box 67 · D-58286 Wetter  
Telephone (02335) 92-0  
Telefax (02335) 922406  
E-mail [handling@demagcranes.com](mailto:handling@demagcranes.com)  
[www.demagcranes.de](http://www.demagcranes.de)

## Table of contents

|          |  |           |
|----------|--|-----------|
| <b>1</b> | <b>General</b>                               | <b>3</b>  |
| <b>2</b> | <b>WSK KBK, data and dimensions</b>          | <b>4</b>  |
| <b>3</b> | <b>SSK KBK, data and dimensions</b>          | <b>6</b>  |
| <b>4</b> | <b>SSK KBK with two jibs</b>                 | <b>8</b>  |
| <b>5</b> | <b>Slewing jib cranes with raised jibs</b>   | <b>10</b> |
| <b>6</b> | <b>Component parts</b>                       | <b>11</b> |
| 6.1      | Electrical equipment                         | 11        |
| 6.2      | Jib  | 11        |
| 6.3      | Pedestal                                     | 13        |
| 6.4      | Floor fittings                               | 14        |
| 6.5      | Hoists                                       | 15        |
| 6.6      | Manufacturer's plate and load capacity plate | 15        |
| <b>7</b> | <b>Options</b>                               | <b>15</b> |
| 7.1      | Slewing limitation                           | 15        |
| 7.2      | Jib stop                                     | 15        |
| 7.3      | Weather canopy                               | 15        |

## Additional documents

|  |            |
|--|------------|
| Anchor bolts for KBK installations                 | 203 276 44 |
| KBK cranes and monorails in explosion hazard areas | 203 371 44 |
| DC, DCM technical data sheet                       | 203 525 44 |
| DKUN, DKM technical data sheet                     | 202 846 44 |
| KBK classic  | 202 976 44 |

# 1 General

KBK slewing jib cranes are classified in lifting class H2, loading group B3 as specified in DIN 15018.

Since the trolleys run smoothly and the jibs are mounted on special bearings, very low forces are required for travelling and slewing.

## Models

The models described help to find suitable solutions for any application. Special solutions on request.

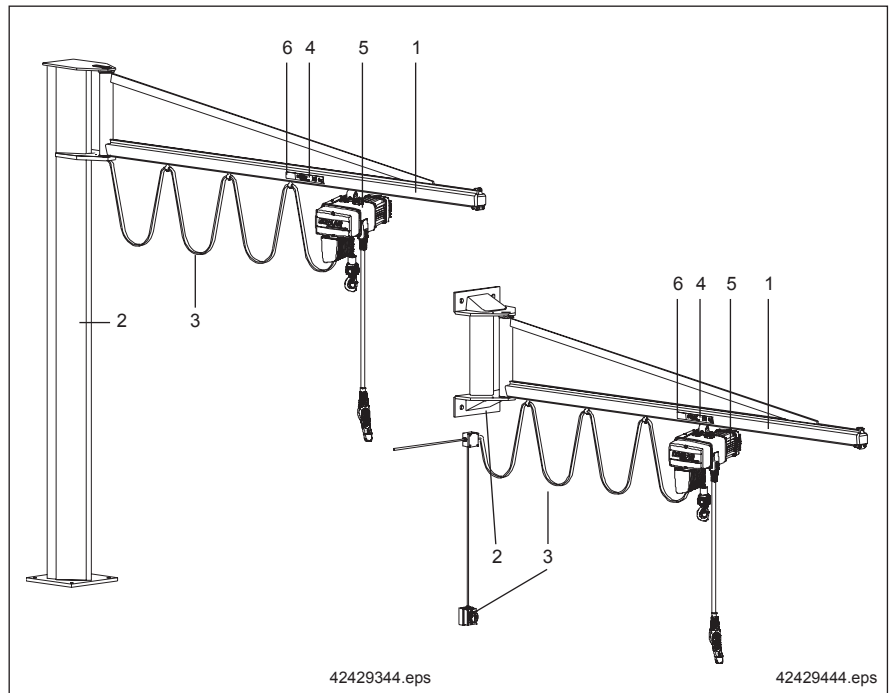
## Hoists

The selection tables shown on the following pages are calculated for up to  $v = 16\text{m/min}$  hoist speed. For further data regarding hoists and admissible dead loads please refer to the hoist section.

## Note



Instructions in the operating and assembly manuals must be complied with. Only genuine Demag parts may be used for KBK installations. These parts ensure the safety of your crane installation. Unauthorised modifications, incorrect usage and incorrect installation exempt the manufacturer from liability for any damages resulting therefrom.



## Components

1. Jib, including trolley, cable sliders and buffer, jib bearing (KBK 100, I, I-V);
2. Bracket or pillar complete, jib bearing (KBK II, II-V);
3. Electrical equipment
4. Load capacity plate (2 off)
5. Hoist;
6. Manufacturer's plate.

## Further SSK assemblies

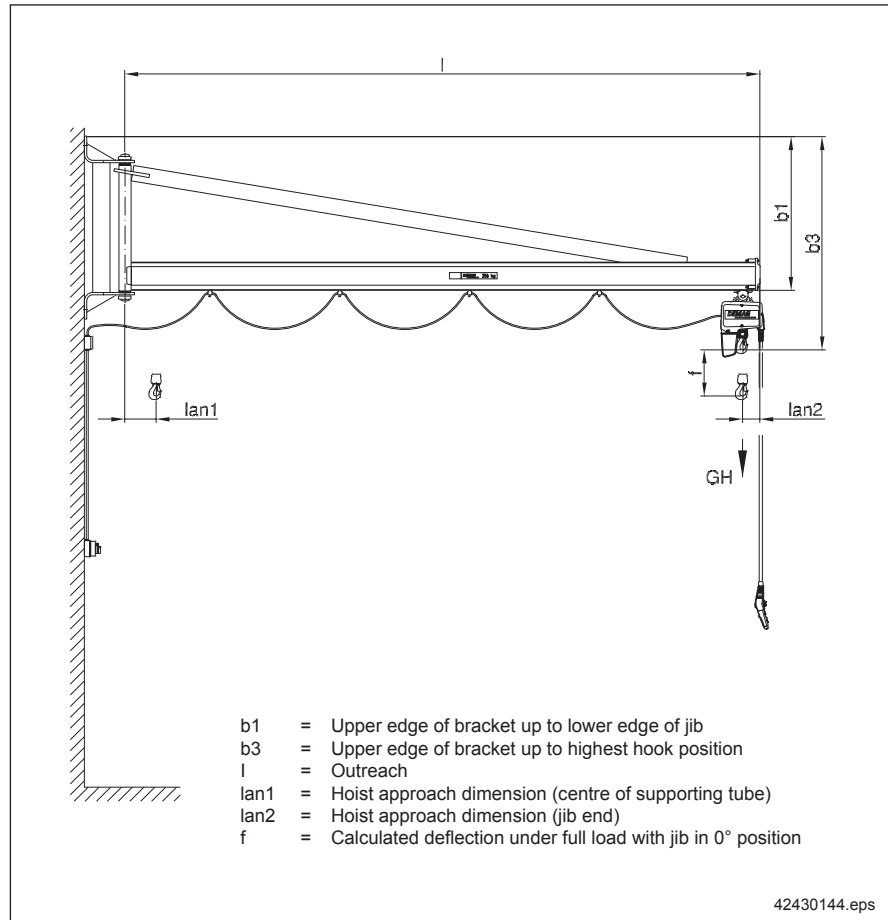
- Anchorage;
- Template;
- Pedestal for pillar extension;
- Heavy-duty anchors with intermediate plate acc. to data sheet no. 203 276 44.

## Paint finish

Pillar, pedestal, bracket, jib: Daffodil yellow (RAL 1007),

A special paint finish is possible for outdoor operation or under special ambient conditions.

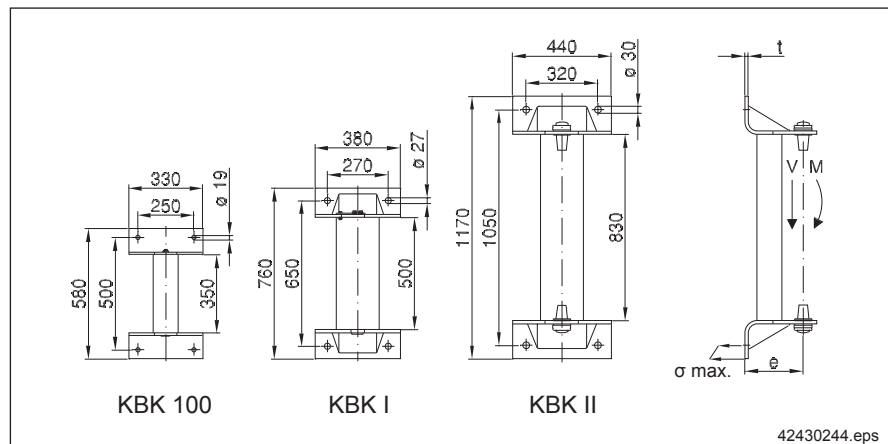
## 2 WSK KBK, data and dimensions



### Note

Slewing range 270° (2 x 135°). Jib position as shown in diagram 0°.

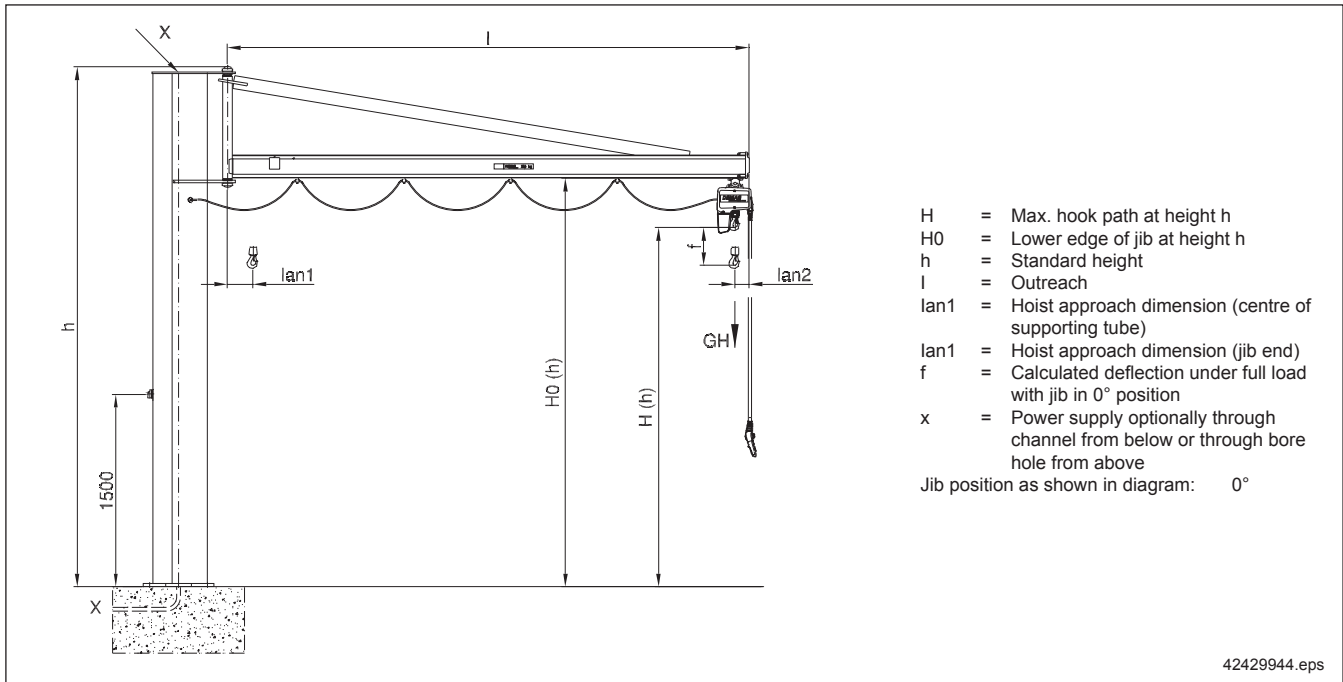
The wall bracket anchorage is not included in the scope of supply as the local conditions may vary considerably. The anchor rods used must at least be of quality grade 5.6.



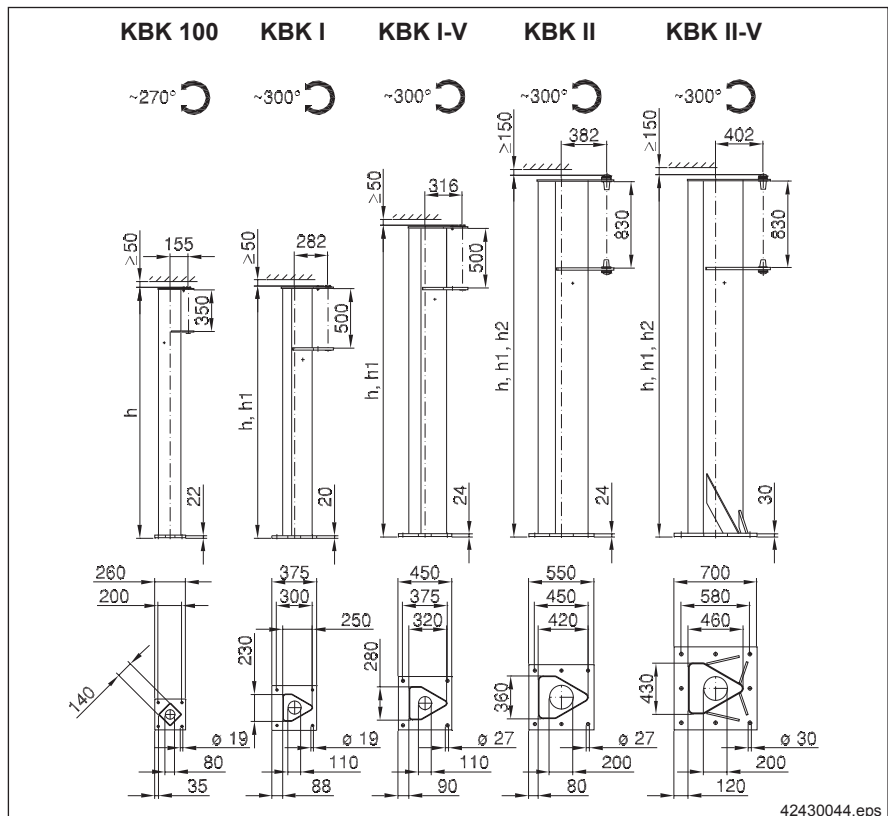
| Bracket type | Part no.   | Anchor | t<br>[mm] | e<br>[mm] | Bracket weight<br>[kg] |
|--------------|------------|--------|-----------|-----------|------------------------|
| KBK 100      | 851 061 44 | M16    | 10        | 160       | 16                     |
| I            | 851 039 44 | M24    | 15        | 260       | 45                     |
| II           | 851 040 44 | M27    | 15        | 260       | 60                     |

| New line | (Old line) | Lifted load | Out-reach | Jib      | Jib section profile | Bracket  | Electrical equipment | I        | Ian1 | Ian2 | b1   | b3 2) | M 1) | V 1)  | σ max. | Deflection |
|----------|------------|-------------|-----------|----------|---------------------|----------|----------------------|----------|------|------|------|-------|------|-------|--------|------------|
|          |            |             |           | Part no. | KBK ...             | Part no. | Part no.             | [mm]     | [mm] | [mm] | [mm] | [mm]  | [mm] | [kNm] | [kN]   | [N/cm²]    |
| 101      | (3)        | 80          | 2         | 98456244 | 100                 | 85106144 | 98011344             | 2015     | 375  | 100  | 456  | 840   | 2,8  | 1,6   | 20     | 3          |
| 102      | (4)        |             | 3         | 98456344 | 100                 | 85106144 | 98011344             | 3015     | 415  | 100  | 456  | 840   | 4,2  | 1,7   | 30     | 6          |
| 103      |            |             | 4         | 98004044 | I                   | 85103944 | 98011444             | 4055     | 485  | 100  | 623  | 1004  | 6,2  | 2,3   | 25     | 5          |
| 104      | (5)        |             | 5         | 98005044 | I                   | 85103944 | 98011444             | 5055     | 525  | 100  | 623  | 1004  | 7,9  | 2,4   | 40     | 18         |
| 105      |            |             | 6         | 98256044 | II                  | 85104044 | 98011044             | 6060     | 765  | 115  | 982  | 1359  | 13,1 | 3,6   | 25     | 3          |
| 106      |            |             | 7         | 98257044 | II                  | 85104044 | 98011044             | 7060     | 825  | 115  | 982  | 1359  | 16,4 | 3,9   | 30     | 6          |
| 107      | (6)        |             | 100       | 2        | 98002144            | I        | 85103944             | 98011344 | 2055 | 405  | 100  | 623   | 1004 | 3,6   | 2,4    | 15         |
| 108      | (7)        | 3           |           | 98003044 | I                   | 85103944 | 98011344             | 3055     | 445  | 100  | 623  | 1004  | 5,2  | 2,4   | 20     | 3          |
| 109      | (8)        | 4           |           | 98004044 | I                   | 85103944 | 98011444             | 4055     | 485  | 100  | 623  | 1004  | 7,0  | 2,5   | 30     | 7          |
| 110      | (9)        | 5           |           | 98055044 | I-V (II)            | 85103944 | 98011444             | 5060     | 650  | 115  | 623  | 1000  | 11,3 | 3,3   | 45     | 7          |
| 111      | (10)       | 6           |           | 98256044 | II                  | 85104044 | 98011044             | 6060     | 765  | 115  | 982  | 1359  | 14,3 | 3,7   | 25     | 4          |
| 112      | (11)       | 7           |           | 98257044 | II                  | 85104044 | 98011044             | 7060     | 825  | 115  | 982  | 1359  | 17,7 | 4,1   | 30     | 7          |
| 113      | (6)        | 125         | 2         | 98002144 | I                   | 85103944 | 98011344             | 2055     | 405  | 100  | 623  | 1004  | 4,3  | 2,7   | 20     | 2          |
| 114      | (7)        |             | 3         | 98003044 | I                   | 85103944 | 98011344             | 3055     | 445  | 100  | 623  | 1004  | 6,2  | 2,7   | 30     | 4          |
| 115      | (8)        |             | 4         | 98004044 | I                   | 85103944 | 98011444             | 4055     | 485  | 100  | 623  | 1004  | 8,3  | 2,8   | 30     | 8          |
| 116      | (9)        |             | 5         | 98055044 | I-V (II)            | 85103944 | 98011444             | 5060     | 650  | 115  | 623  | 1000  | 12,9 | 3,6   | 50     | 9          |
| 117      | (10)       |             | 6         | 98256044 | II                  | 85104044 | 98011044             | 6060     | 765  | 115  | 982  | 1359  | 16,2 | 4,1   | 30     | 5          |
| 118      | (11)       |             | 7         | 98257044 | II                  | 85104044 | 98011044             | 7060     | 825  | 115  | 982  | 1359  | 20,0 | 4,4   | 35     | 9          |
| 119      | (12)       |             | 160       | 2        | 98002144            | I        | 85103944             | 98011344 | 2055 | 405  | 100  | 623   | 1004 | 6,0   | 3,4    | 20         |
| 120      | (13)       | 3           |           | 98003044 | I                   | 85103944 | 98011344             | 3055     | 445  | 100  | 623  | 1004  | 8,6  | 3,4   | 30     | 5          |
| 121      | (14)       | 4           |           | 98054044 | I-V (II)            | 85103944 | 98011444             | 4060     | 590  | 115  | 623  | 1000  | 13,0 | 4,1   | 45     | 9          |
| 122      | (15)       | 5           |           | 98055044 | I-V (II)            | 85103944 | 98011444             | 5060     | 650  | 115  | 623  | 1000  | 16,8 | 4,4   | 60     | 12         |
| 123      | (16)       | 6           |           | 98256044 | II                  | 85104044 | 98011044             | 6060     | 765  | 115  | 982  | 1359  | 20,8 | 4,8   | 35     | 7          |
| 124      | (17)       | 7           |           | 98257044 | II                  | 85104044 | 98011044             | 7060     | 825  | 115  | 982  | 1359  | 25,3 | 5,1   | 40     | 12         |
| 125      | (18)       | 200         |           | 2        | 98002144            | I        | 85103944             | 98011344 | 2055 | 405  | 100  | 623   | 1004 | 6,7   | 3,7    | 25         |
| 126      | (19)       |             | 3         | 98003044 | I                   | 85103944 | 98011344             | 3055     | 445  | 100  | 623  | 1004  | 9,7  | 3,8   | 40     | 6          |
| 127      | (20)       |             | 4         | 98054044 | I-V (II)            | 85103944 | 98011444             | 4060     | 590  | 115  | 623  | 1000  | 14,4 | 4,4   | 55     | 12         |
| 128      | (21)       |             | 5         | 98055044 | I-V (II)            | 85103944 | 98011444             | 5060     | 650  | 115  | 623  | 1000  | 18,5 | 4,7   | 70     | 15         |
| 129      | (22)       |             | 6         | 98256044 | II                  | 85104044 | 98011044             | 6060     | 765  | 115  | 982  | 1359  | 22,9 | 5,1   | 40     | 9          |
| 130      | (23)       |             | 7         | 98257044 | II                  | 85104044 | 98011044             | 7060     | 825  | 115  | 982  | 1359  | 27,7 | 5,5   | 50     | 14         |
| 131      | (24)       |             | 250       | 2        | 98002144            | I        | 85103944             | 98011344 | 2055 | 405  | 100  | 623   | 1004 | 8,2   | 4,4    | 30         |
| 132      | (25)       | 3           |           | 98003044 | I                   | 85103944 | 98011344             | 3055     | 445  | 100  | 623  | 1004  | 11,8 | 4,4   | 40     | 7          |
| 133      | (26)       | 4           |           | 98054044 | I-V (II)            | 85103944 | 98011444             | 4060     | 590  | 115  | 623  | 1000  | 16,9 | 5,0   | 64     | 15         |
| 134      | (27)       | 5           |           | 98205044 | II                  | 85104044 | 98011444             | 5060     | 705  | 115  | 982  | 1359  | 21,8 | 5,5   | 40     | 6          |
| 135      | (28)       | 6           |           | 98256044 | II                  | 85104044 | 98011044             | 6060     | 765  | 115  | 982  | 1359  | 26,6 | 5,7   | 47     | 11         |
| 136      | (29)       | 7           |           | 98257044 | II                  | 85104044 | 98011044             | 7060     | 825  | 115  | 982  | 1359  | 32,1 | 6,1   | 60     | 18         |
| 137      | (30)       | 315         |           | 2        | 98002044            | I        | 85103944             | 98011344 | 2055 | 510  | 205  | 623   | 1059 | 9,4   | 5,2    | 35         |
| 138      | (31)       |             | 3         | 98003844 | I                   | 85103944 | 98011344             | 3055     | 550  | 205  | 623  | 1059  | 13,9 | 5,2   | 50     | 9          |
| 139      | (32)       |             | 4         | 98204044 | II                  | 85104044 | 98011444             | 4060     | 645  | 115  | 982  | 1404  | 20,5 | 6,1   | 40     | 4          |
| 140      | (33)       |             | 5         | 98205044 | II                  | 85104044 | 98011444             | 5060     | 705  | 115  | 982  | 1404  | 26,1 | 6,3   | 46     | 7          |
| 141      | (34)       |             | 6         | 98256044 | II                  | 85104044 | 98011044             | 6060     | 765  | 115  | 982  | 1404  | 31,7 | 6,6   | 55     | 14         |
| 142      | (35)       |             | 7         | 98257044 | II                  | 85104044 | 98011044             | 7060     | 825  | 115  | 982  | 1404  | 37,9 | 6,9   | 65     | 23         |
| 143      | (36)       |             | 400       | 2        | 98002044            | I        | 85103944             | 98011344 | 2055 | 510  | 205  | 623   | 1059 | 11,6  | 6,2    | 45         |
| 144      | (37)       | 3           |           | 98053044 | I-V (II)            | 85103944 | 98011344             | 3060     | 530  | 115  | 623  | 1045  | 18,5 | 6,7   | 75     | 8          |
| 145      | (38)       | 4           |           | 98204044 | II                  | 85104044 | 98011444             | 4060     | 645  | 115  | 982  | 1404  | 24,8 | 7,1   | 45     | 5          |
| 146      | (39)       | 5           |           | 98205044 | II                  | 85104044 | 98011444             | 5060     | 705  | 115  | 982  | 1404  | 31,4 | 7,4   | 56     | 9          |
| 147      | (40)       | 6           |           | 98256044 | II                  | 85104044 | 98011044             | 6060     | 765  | 115  | 982  | 1404  | 38,1 | 7,6   | 67     | 17         |
| 148      | (41)       | 500         |           | 2        | 98002044            | I        | 85103944             | 98011344 | 2055 | 510  | 205  | 623   | 1059 | 13,9  | 7,3    | 52         |
| 149      | (42)       |             | 3         | 98053044 | I-V (II)            | 85103944 | 98011344             | 3060     | 530  | 115  | 982  | 1045  | 22,9 | 8,0   | 90     | 11         |
| 150      | (43)       |             | 4         | 98204044 | II                  | 85104044 | 98011444             | 4060     | 645  | 115  | 982  | 1404  | 30,6 | 8,5   | 50     | 6          |
| 151      | (44)       |             | 5         | 98205044 | II                  | 85104044 | 98011444             | 5060     | 705  | 115  | 982  | 1404  | 38,5 | 8,7   | 70     | 11         |
| 152      | (45)       |             | 6         | 98256044 | II                  | 85104044 | 98011044             | 6060     | 765  | 115  | 982  | 1404  | 46,6 | 9,0   | 85     | 21         |
| 154      | (46)       |             | 630       | 3        | 98253044            | II       | 85104044             | 98011344 | 3060 | 710  | 240  | 982   | 1524 | 27,3  | 10,0   | 50         |
| 155      | (47)       | 4           |           | 98254044 | II                  | 85104044 | 98011444             | 4060     | 770  | 240  | 982  | 1524  | 36,7 | 10,2  | 60     | 6          |
| 156      | (48)       | 5           |           | 98255044 | II                  | 85104044 | 98011444             | 5060     | 830  | 240  | 982  | 1524  | 47,1 | 10,8  | 80     | 8          |
| 158      | (49)       | 800         | 3         | 98253044 | II                  | 85104044 | 98011344             | 3060     | 710  | 240  | 982  | 1524  | 34,4 | 12,3  | 60     | 4          |
| 159      | (50)       |             | 4         | 98254044 | II                  | 85104044 | 98011444             | 4060     | 770  | 240  | 982  | 1524  | 46,1 | 12,5  | 80     | 7          |
| 160      | (51)       |             | 5         | 98255044 | II                  | 85104044 | 98011444             | 5060     | 830  | 240  | 982  | 1524  | 57,8 | 12,7  | 100    | 10         |
| 162      | (52)       | 1000        | 3         | 98253044 | II                  | 85104044 | 98011344             | 3060     | 710  | 240  | 982  | 1524  | 41,9 | 14,7  | 75     | 5          |
| 163      | (53)       |             | 4         | 98254044 | II                  | 85104044 | 98011444             | 4060     | 770  | 240  | 982  | 1524  | 56,0 | 15,0  | 100    | 9          |
| 164      | (54)       |             | 5         | 98255044 | II                  | 85104044 | 98011444             | 5060     | 830  | 240  | 982  | 1524  | 71,1 | 15,5  | 125    | 13         |

### 3 SSK KBK, data and dimensions



| Pillar type | $h, h1, h2$<br>[mm] | Pillars<br>Part no. | Weight<br>[kg] |
|-------------|---------------------|---------------------|----------------|
| KBK 100     | 3015                | 851 051 44          | 85             |
| KBK I       | 3025                | 851 022 44          | 135            |
|             | 3525                | 851 023 44          | 150            |
| KBK I-V     | 3525                | 851 025 44          | 225            |
|             | 4025                | 851 026 44          | 250            |
| KBK II      | 4050                | 851 028 44          | 355            |
|             | 4550                | 851 029 44          | 385            |
|             | 5050                | 851 030 44          | 415            |
| KBK II-V    | 4055                | 851 032 44          | 535            |
|             | 4555                | 851 033 44          | 580            |
|             | 5055                | 851 034 44          | 625            |



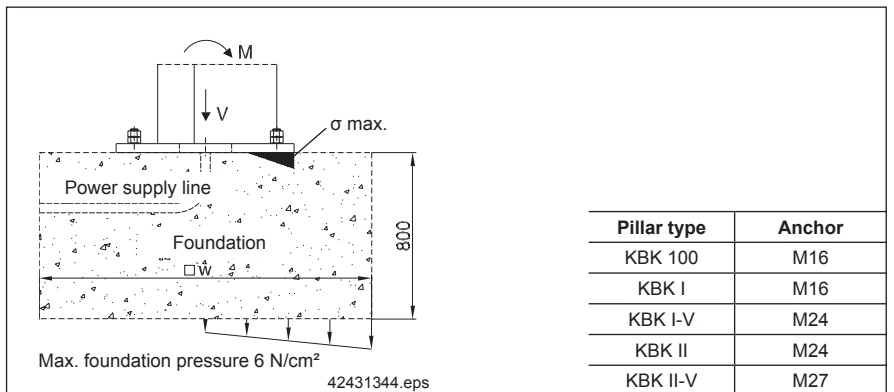
For the following slewing jibs with **anchor plate**,  $h$  is the maximum admissible pillar height due to deflection.

| Pillar   | Lifted load x outreach                   | Max. pillar height $h$ |
|----------|--|------------------------|
| KBK I    | 250 kg x 3 m, 500 kg x 2 m               | 3025 mm                |
| KBK I-V  | 400 kg x 3 m, 500 kg x 3 m, 250 kg x 4 m | 3525 mm                |
| KBK II   | 800 kg x 4 m                             | 4050 mm                |
| KBK II-V | 1000 kg x 5 m                            | 4055 mm                |

However, larger pillar heights can be achieved using pedestals.

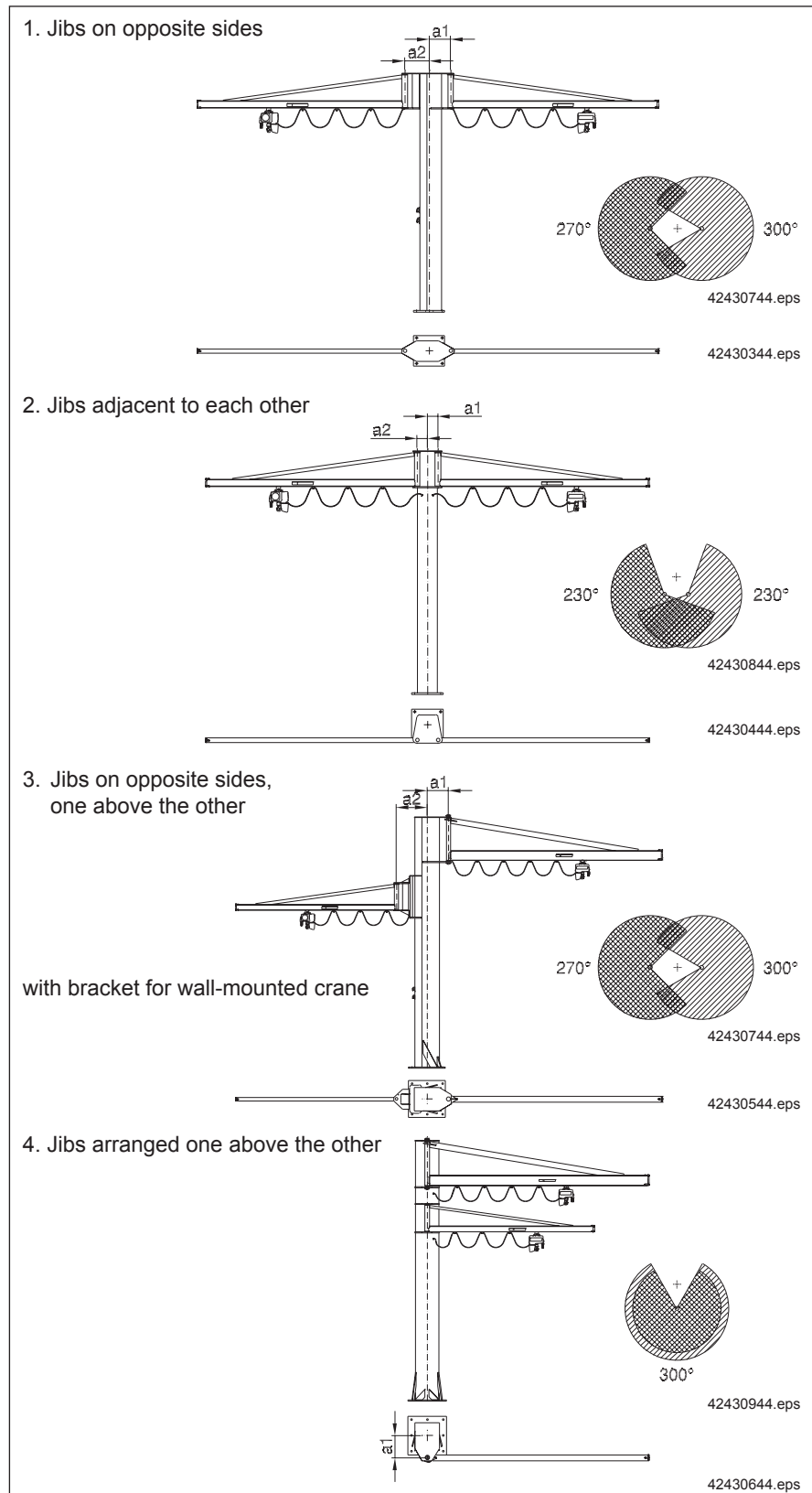
| New line | (Old line) | Lifted load | Out-reach | Jib      | Jib section profile | Pillar type | Electrical equipment | I       | lan1 | lan2 | H (h) <sup>3)</sup> | H0 (h) | M <sup>1)</sup> | V <sup>1) 2)</sup> | w <sup>4)</sup> | σ max. | Deflection |
|----------|------------|-------------|-----------|----------|---------------------|-------------|----------------------|---------|------|------|---------------------|--------|-----------------|--------------------|-----------------|--------|------------|
|          |            |             |           |          |                     |             |                      |         |      |      |                     |        |                 |                    |                 |        |            |
| 201      | (3)        | 80          | 2         | 98456244 | 100                 | 100         | 9801144              | 2015    | 375  | 100  | 2267                | 2650   | 2,8             | 2,4                | 700             | 90     | 10         |
| 202      | (4)        |             | 3         | 98456344 | 100                 | 100         | 9801144              | 3015    | 415  | 100  | 2267                | 2650   | 4,2             | 2,5                | 850             | 130    | 19         |
| 203      |            |             | 4         | 98004044 | I                   | I           | 9801244              | 4055    | 485  | 100  | 2124                | 2505   | 6,4             | 3,4                | 1100            | 70     | 13         |
| 204      | (5)        |             | 5         | 98005044 | I                   | I-V         | 9801244              | 5055    | 525  | 100  | 2624                | 3005   | 8,2             | 4,4                | 1100            | 50     | 25         |
| 205      |            |             | 6         | 98256044 | II                  | II          | 98010044             | 6060    | 765  | 115  | 2802                | 3180   | 14,3            | 7,0                | 1300            | 50     | 7          |
| 206      |            |             | 7         | 98257044 | II                  | II          | 98010044             | 7060    | 825  | 115  | 2802                | 3180   | 17,8            | 7,3                | 1400            | 60     | 11         |
| 207      |            |             | 100       | 2        | 98002144            | I           | I                    | 9801144 | 2055 | 405  | 100                 | 2124   | 2505            | 3,7                | 3,4             | 800    | 40         |
| 208      |            | 3           |           | 98003044 | I                   | I           | 9801144              | 3055    | 445  | 100  | 2124                | 2505   | 5,4             | 3,4                | 1000            | 60     | 8          |
| 209      |            | 4           |           | 98004044 | I                   | I           | 9801244              | 4055    | 485  | 100  | 2124                | 2505   | 7,2             | 3,5                | 1100            | 70     | 16         |
| 210      |            | 4           |           | 98004044 | I                   | I-V         | 9801244              | 4055    | 485  | 100  | 2624                | 3005   | 7,3             | 4,5                | 1100            | 40     | 11         |
| 211      |            | 5           |           | 98055044 | I-V (II)            | I-V         | 9801244              | 5060    | 650  | 115  | 2627                | 3005   | 12,0            | 5,4                | 1200            | 70     | 14         |
| 212      |            | 6           |           | 98256044 | II                  | II          | 98010044             | 6060    | 765  | 115  | 2802                | 3180   | 15,5            | 7,1                | 1300            | 50     | 9          |
| 213      |            | 7           |           | 98257044 | II                  | II          | 98010044             | 7060    | 825  | 115  | 2802                | 3180   | 19,2            | 7,5                | 1400            | 60     | 14         |
| 214      | (6)        | 125         | 2         | 98002144 | I                   | I           | 9801144              | 2055    | 405  | 100  | 2124                | 2505   | 4,4             | 3,7                | 800             | 50     | 5          |
| 215      | (7)        |             | 3         | 98003044 | I                   | I           | 9801144              | 3055    | 445  | 100  | 2124                | 2505   | 6,3             | 3,7                | 1000            | 70     | 10         |
| 216      | (8)        |             | 4         | 98004044 | I                   | I           | 9801244              | 4055    | 485  | 100  | 2124                | 2505   | 8,5             | 3,8                | 1100            | 90     | 20         |
| 217      | (9)        |             | 4         | 98004044 | I                   | I-V         | 9801244              | 4055    | 485  | 100  | 2624                | 3005   | 8,6             | 4,8                | 1100            | 50     | 14         |
| 218      | (10)       |             | 5         | 98055044 | I-V (II)            | I-V         | 9801244              | 5060    | 650  | 115  | 2627                | 3005   | 13,6            | 5,7                | 1200            | 80     | 18         |
| 219      | (11)       |             | 6         | 98256044 | II                  | II          | 98010044             | 6060    | 765  | 115  | 2802                | 3180   | 17,4            | 7,5                | 1300            | 60     | 11         |
| 220      | (12)       |             | 7         | 98257044 | II                  | II          | 98010044             | 7060    | 825  | 115  | 2802                | 3180   | 21,5            | 7,8                | 1400            | 75     | 17         |
| 221      | (13)       | 160         | 2         | 98002144 | I                   | I           | 9801144              | 2055    | 405  | 100  | 2124                | 2505   | 6,1             | 4,4                | 900             | 65     | 7          |
| 222      | (14)       |             | 3         | 98003044 | I                   | I           | 9801144              | 3055    | 445  | 100  | 2124                | 2505   | 8,8             | 4,5                | 1100            | 90     | 13         |
| 223      | (15)       |             | 4         | 98054044 | I-V (II)            | I-V         | 9801244              | 4060    | 590  | 115  | 2627                | 3005   | 13,7            | 6,3                | 1200            | 80     | 17         |
| 224      | (16)       |             | 5         | 98055044 | I-V (II)            | I-V         | 9801244              | 5060    | 650  | 115  | 2627                | 3005   | 17,8            | 6,6                | 1300            | 100    | 23         |
| 225      | (17)       |             | 6         | 98256044 | II                  | II          | 98010044             | 6060    | 765  | 115  | 2802                | 3180   | 22,5            | 8,3                | 1400            | 70     | 15         |
| 226      | (18)       |             | 7         | 98257044 | II                  | II          | 98010044             | 7060    | 825  | 115  | 2802                | 3180   | 27,5            | 8,7                | 1600            | 85     | 23         |
| 227      | (19)       |             | 200       | 2        | 98002144            | I           | I                    | 9801144 | 2055 | 405  | 100                 | 2124   | 2505            | 6,8                | 4,7             | 1000   | 80         |
| 228      | (20)       | 3           |           | 98003044 | I                   | I           | 9801144              | 3055    | 445  | 100  | 2124                | 2505   | 9,8             | 4,8                | 1200            | 110    | 16         |
| 229      | (21)       | 4           |           | 98054044 | I-V (II)            | I-V         | 9801244              | 4060    | 590  | 115  | 2627                | 3005   | 15,0            | 6,5                | 1300            | 90     | 21         |
| 230      | (22)       | 5           |           | 98055044 | I-V (II)            | I-V         | 9801244              | 5060    | 650  | 115  | 2627                | 3005   | 19,3            | 6,8                | 1400            | 115    | 29         |
| 231      | (23)       | 6           |           | 98256044 | II                  | II          | 98010044             | 6060    | 765  | 115  | 2802                | 3180   | 24,2            | 8,5                | 1500            | 80     | 19         |
| 232      | (24)       | 7           |           | 98257044 | II                  | II-V        | 98010044             | 7060    | 825  | 115  | 2807                | 3185   | 29,5            | 10,8               | 1700            | 50     | 22         |
| 233      | (25)       | 250         |           | 2        | 98002144            | I           | I                    | 9801144 | 2055 | 405  | 100                 | 2124   | 2505            | 8,1                | 5,3             | 1000   | 90         |
| 234      | (26)       |             | 2         | 98002144 | I                   | I-V         | 9801144              | 2055    | 405  | 100  | 2624                | 3005   | 8,3             | 6,3                | 1000            | 50     | 7          |
| 235      | (27)       |             | 3         | 98003044 | I                   | I           | 9801144              | 3055    | 445  | 100  | 2124                | 2505   | 11,8            | 5,4                | 1200            | 120    | 20         |
| 236      | (28)       |             | 3         | 98003044 | I                   | I-V         | 9801144              | 3055    | 445  | 100  | 2624                | 3005   | 12,0            | 6,4                | 1200            | 80     | 14         |
| 237      | (29)       |             | 4         | 98054044 | I-V (II)            | I-V         | 9801244              | 4060    | 590  | 115  | 2627                | 3005   | 17,6            | 7,1                | 1300            | 100    | 26         |
| 238      | (30)       |             | 5         | 98205044 | II                  | II          | 9801244              | 5060    | 705  | 115  | 2802                | 3180   | 23,1            | 8,9                | 1500            | 80     | 15         |
| 239      | (31)       |             | 6         | 98256044 | II                  | II          | 98010044             | 6060    | 765  | 115  | 2802                | 3180   | 28,1            | 9,1                | 1600            | 100    | 23         |
| 240      | (32)       | 7           | 98257044  | II       | II-V                | 98010044    | 7060                 | 825     | 115  | 2807 | 3185                | 34,0   | 11,4            | 1800               | 60              | 27     |            |
| 241      | (33)       | 315         | 2         | 98002044 | I                   | I           | 9801144              | 2055    | 510  | 205  | 2069                | 2505   | 9,5             | 6,2                | 1050            | 105    | 10         |
| 242      | (34)       |             | 3         | 98003844 | I                   | I-V         | 9801144              | 3055    | 550  | 205  | 2569                | 3005   | 14,3            | 7,2                | 1250            | 90     | 18         |
| 243      | (35)       |             | 4         | 98204044 | II                  | II          | 9801244              | 4060    | 645  | 115  | 2757                | 3180   | 21,7            | 9,4                | 1400            | 75     | 11         |
| 244      | (36)       |             | 5         | 98205044 | II                  | II          | 9801244              | 5060    | 705  | 115  | 2757                | 3180   | 27,4            | 9,7                | 1600            | 90     | 18         |
| 245      | (37)       |             | 6         | 98256044 | II                  | II          | 98010044             | 6060    | 765  | 115  | 2757                | 3180   | 33,3            | 9,9                | 1600            | 110    | 29         |
| 246      | (38)       |             | 7         | 98257044 | II                  | II-V        | 98010044             | 7060    | 825  | 115  | 2762                | 3185   | 40,1            | 12,3               | 1700            | 65     | 35         |
| 247      | (39)       |             | 400       | 2        | 98002044            | I           | I                    | 9801144 | 2055 | 510  | 205                 | 2069   | 2505            | 11,8               | 7,2             | 1100   | 130        |
| 248      | (40)       | 3           |           | 98053044 | I-V (II)            | I-V         | 9801144              | 3060    | 530  | 115  | 2582                | 3005   | 19,2            | 8,7                | 1300            | 115    | 19         |
| 249      | (41)       | 4           |           | 98204044 | II                  | II          | 9801244              | 4060    | 645  | 115  | 2757                | 3180   | 26,2            | 10,4               | 1500            | 90     | 14         |
| 250      | (42)       | 5           |           | 98205044 | II                  | II          | 9801244              | 5060    | 705  | 115  | 2757                | 3180   | 33,0            | 10,7               | 1650            | 110    | 23         |
| 251      | (43)       | 6           |           | 98256044 | II                  | II-V        | 98010044             | 6060    | 765  | 115  | 2762                | 3185   | 40,1            | 12,9               | 1800            | 65     | 28         |
| 252      | (44)       | 2           |           | 98002044 | I                   | I           | 9801144              | 2055    | 510  | 205  | 2069                | 2505   | 14,1            | 8,3                | 1200            | 160    | 16         |
| 253      | (45)       | 2           |           | 98002044 | I                   | I-V         | 9801144              | 2055    | 510  | 205  | 2569                | 3005   | 14,4            | 9,3                | 1200            | 100    | 10         |
| 254      | (46)       | 3           | 98053044  | I-V (II) | I-V                 | 9801144     | 3060                 | 530     | 115  | 2582 | 3005                | 23,6   | 10,1            | 1400               | 140             | 24     |            |
| 255      | (47)       | 3           | 98203044  | II       | II                  | 9801144     | 3060                 | 585     | 115  | 2757 | 3180                | 24,5   | 11,6            | 1400               | 90              | 10     |            |
| 256      | (49)       | 4           | 98204044  | II       | II                  | 9801244     | 4060                 | 645     | 115  | 2757 | 3180                | 32,1   | 11,8            | 1600               | 110             | 17     |            |
| 257      | (50)       | 4           | 98204044  | II       | II-V                | 9801244     | 4060                 | 645     | 115  | 2762 | 3185                | 32,4   | 13,7            | 1600               | 60              | 12     |            |
| 258      | (51)       | 5           | 98205044  | II       | II                  | 9801244     | 5060                 | 705     | 115  | 2757 | 3180                | 40,3   | 12,1            | 1750               | 130             | 29     |            |
| 259      | (52)       | 5           | 98205044  | II       | II-V                | 9801244     | 5060                 | 705     | 115  | 2762 | 3185                | 40,5   | 14,0            | 1750               | 70              | 22     |            |
| 260      | (53)       | 6           | 98256044  | II       | II-V                | 98010044    | 6060                 | 765     | 115  | 2762 | 3185                | 48,8   | 14,3            | 1900               | 80              | 36     |            |
| 262      | (54)       | 630         | 3         | 98253044 | II                  | II          | 9801144              | 3060    | 710  | 240  | 2637                | 3180   | 29,0            | 13,3               | 1600            | 95     | 12         |
| 263      | (55)       |             | 4         | 98254044 | II                  | II          | 9801244              | 4060    | 770  | 240  | 2637                | 3180   | 38,5            | 13,6               | 1800            | 125    | 20         |
| 264      | (56)       |             | 5         | 98255044 | II                  | II-V        | 9801244              | 5060    | 830  | 240  | 2642                | 3185   | 49,6            | 16,1               | 2000            | 80     | 20         |
| 266      | (57)       | 800         | 3         | 98253044 | II                  | II          | 9801144              | 3060    | 710  | 240  | 2637                | 3180   | 36,4            | 15,6               | 1700            | 115    | 15         |
| 267      | (58)       |             | 4         | 98254044 | II                  | II          | 9801244              | 4060    | 770  | 240  | 2637                | 3180   | 48,3            | 15,9               | 1900            | 150    | 26         |
| 268      | (59)       |             | 5         | 98255044 | II                  | II-V        | 9801244              | 5060    | 830  | 240  | 2642                | 3185   | 61,7            | 18,4               | 2100            | 95     | 25         |
| 270      | (60)       |             | 1000      | 3        | 98253044            | II          | II                   | 9801144 | 3060 | 710  | 240                 | 2637   | 3180            | 44,2               | 18,0            | 1750   | 150        |
| 271      | (61)       | 3           |           | 98253044 | II                  | II-V        | 9801144              | 3060    | 710  | 240  | 2642                | 3185   | 44,7            | 19,9               | 1750            | 70     | 10         |
| 272      | (62)       | 4           |           | 98254044 | II                  | II-V        | 9801244              | 4060    | 770  | 240  | 2642                | 3185   | 59,0            | 20,2               | 1950            | 90     | 21         |
| 273      | (63)       | 5           |           | 98255044 | II                  | II-V        | 9801244              | 5060    | 830  | 240  | 2642                | 3185   | 74,5            | 20,9               | 2150            | 120    | 32         |

- Moment and weight including coefficients to DIN 15018
- Vertical force for short pillar. With a longer pillar a higher pillar weight must be taken into account. See pillar table.
- For DC with long suspension eye
- Safety against turning over > 1,8 concrete quality min. B25



## 4 SSK KBK with two jibs

### Combinations, working zones



Pillar-mounted slewing jib cranes with two jibs provide better use of the working area while little space is required for the crane itself. They have the same design as KBK pillar-mounted slewing jib cranes. The pillar shaft, bearings and bore hole patterns of the base plate are the same.



| Pillar type | 1st jib                              |                                      | 2nd jib      |                          | 1st jib                  |                          | 2nd jib |   | Possible combinations |   |  |  |
|-------------|--------------------------------------|--------------------------------------|--------------|--------------------------|--------------------------|--------------------------|---------|---|-----------------------|---|--|--|
|             | Lifted load x outreach<br>[kg] x [m] | Lifted load x outreach<br>[kg] x [m] | Jib type     | Jib<br>Part no.          | Jib type                 | Jib<br>Part no.          |         |   |                       |   |  |  |
| KBK I       | 200 x 3                              | 200 x 2                              | KBK I        | 980 030 44               | KBK I                    | 980 021 44               | 1       | 2 | 3                     | 4 |  |  |
|             | 250 x 2                              | 160 x 3                              |              | 980 020 44               |                          | 980 030 44               |         |   |                       |   |  |  |
|             | 315 x 2                              | 160 x 2                              |              | 980 020 44               |                          | 980 021 44               |         |   |                       |   |  |  |
|             | 400 x 2                              | 125 x 2                              |              | 980 020 44               |                          | 980 021 44               |         |   |                       |   |  |  |
| KBK I-V     | 125 x 4                              | 125 x 4                              | KBK I        | 980 040 44               | KBK I                    | 980 040 44               | 1       | 2 | 3                     | 4 |  |  |
|             | 160 x 3                              | 250 x 4                              |              | 980 030 44               | KBK I-V (II)             | 980 540 44               |         |   |                       |   |  |  |
|             | 200 x 3                              | 250 x 3                              |              | 980 030 44               | KBK I                    | 980 030 44               |         |   |                       |   |  |  |
|             | 250 x 3                              | 250 x 2                              |              | 980 030 44               |                          | 980 021 44               |         |   |                       |   |  |  |
|             | 315 x 2                              | 250 x 2                              |              | 980 021 44               |                          | 980 021 44               |         |   |                       |   |  |  |
|             | 315 x 3                              | 125 x 3                              |              | 980 038 44               |                          | 980 030 44               |         |   |                       |   |  |  |
|             | 500 x 2                              | 125 x 2                              |              | 980 020 44               |                          | 980 030 44               |         |   |                       |   |  |  |
| KBK II      | 125 x 6                              | 200 x 6                              | KBK II       | 982 560 44               | KBK II                   | 982 560 44               | 1       | 2 | 3                     | - |  |  |
|             |                                      | 400 x 5                              |              |                          |                          | 982 050 44               |         |   |                       |   |  |  |
|             |                                      | 500 x 4                              |              |                          |                          | 982 040 44               |         |   |                       |   |  |  |
|             |                                      | 630 x 3                              |              |                          |                          | 982 030 44               |         |   |                       |   |  |  |
|             | 160 x 6                              | 160 x 6                              |              | 982 560 44               | KBK II                   | 982 560 44               |         |   |                       |   |  |  |
|             |                                      | 250 x 5                              |              | 982 050 44               |                          |                          |         |   |                       |   |  |  |
|             |                                      | 400 x 4                              |              | 982 040 44               |                          |                          |         |   |                       |   |  |  |
|             |                                      | 500 x 3                              |              | 982 030 44               |                          |                          |         |   |                       |   |  |  |
|             | 200 x 6                              | 200 x 5                              |              | 982 560 44               | KBK I-V (II)             | 980 550 44 <sup>1)</sup> |         |   |                       |   |  |  |
|             |                                      | 315 x 4                              |              | KBK II                   | 982 040 44               |                          |         |   |                       |   |  |  |
|             |                                      | 400 x 3                              |              | KBK I-V (II)             | 980 530 44 <sup>2)</sup> |                          |         |   |                       |   |  |  |
|             | 250 x 5                              | 250 x 5                              |              | 982 050 44               | KBK II                   | 982 050 44               |         |   |                       |   |  |  |
|             |                                      | 315 x 4                              |              | KBK II                   | 982 040 44               |                          |         |   |                       |   |  |  |
|             |                                      | 400 x 3                              |              | KBK I-V (II)             | 980 530 44 <sup>2)</sup> |                          |         |   |                       |   |  |  |
|             | 400 x 5                              | 200 x 5                              |              | 982 050 44               | KBK I-V (II)             | 980 550 44 <sup>1)</sup> |         |   |                       |   |  |  |
|             |                                      | 250 x 4                              |              | KBK I-V (II)             | 980 540 44 <sup>3)</sup> |                          |         |   |                       |   |  |  |
|             |                                      | 315 x 3                              |              | KBK I                    | 980 038 44               |                          |         |   |                       |   |  |  |
|             | 500 x 5                              | 160 x 4                              |              | 982 050 44               | KBK I-V (II)             | 980 540 44 <sup>3)</sup> |         |   |                       |   |  |  |
|             |                                      | 250 x 3                              |              | KBK I                    | 980 030 44               |                          |         |   |                       |   |  |  |
|             |                                      | 500 x 4                              |              | 982 040 44               | KBK I                    | 980 030 44               |         |   |                       |   |  |  |
| 500 x 3     | 200 x 4                              | 982 030 44                           | KBK I-V (II) | 980 540 44 <sup>3)</sup> |                          |                          |         |   |                       |   |  |  |
|             | 315 x 3                              | KBK I                                | 980 031 44   |                          |                          |                          |         |   |                       |   |  |  |
|             |                                      |                                      |              |                          |                          |                          |         |   |                       |   |  |  |
| KBK II-V    | 160 x 7                              | 200 x 7                              | KBK II       | 982 570 44               | KBK II                   | 982 570 44               | 1       | 2 | 3                     | - |  |  |
|             |                                      | 400 x 6                              |              |                          |                          | 982 560 44               |         |   |                       |   |  |  |
|             |                                      | 800 x 5                              |              |                          |                          | 982 550 44               |         |   |                       |   |  |  |
|             | 315 x 6                              | 200 x 7                              |              | 982 570 44               | KBK II                   | 982 570 44               |         |   |                       |   |  |  |
|             |                                      | 250 x 6                              |              | 982 560 44               |                          |                          |         |   |                       |   |  |  |
|             |                                      | 800 x 5                              |              | 982 550 44               |                          |                          |         |   |                       |   |  |  |
|             | 400 x 5                              | 800 x 4                              |              | 982 540 44               | KBK II                   | 982 540 44               |         |   |                       |   |  |  |
|             |                                      | 500 x 5                              |              | 982 050 44               |                          | 982 050 44               |         |   |                       |   |  |  |
|             | 500 x 5                              | 630 x 4                              |              | 982 540 44               | KBK I-V (II)             | 980 550 44 <sup>1)</sup> |         |   |                       |   |  |  |
|             |                                      | 200 x 5                              |              | 982 550 44               |                          | 980 550 44 <sup>1)</sup> |         |   |                       |   |  |  |
|             |                                      | 125 x 5                              |              | 982 540 44               |                          | 980 540 44 <sup>3)</sup> |         |   |                       |   |  |  |
|             | 1000 x 4                             | 200 x 4                              |              | 982 540 44               | KBK I-V (II)             | 980 540 44 <sup>3)</sup> |         |   |                       |   |  |  |
| 250 x 3     |                                      | KBK I                                | 980 030 44   |                          |                          |                          |         |   |                       |   |  |  |
| 1000 x 3    | 500 x 3                              | 982 530 44                           | KBK II       | 982 030 44               |                          |                          |         |   |                       |   |  |  |
|             | 315 x 4                              | 982 040 44                           |              | 982 040 44               |                          |                          |         |   |                       |   |  |  |

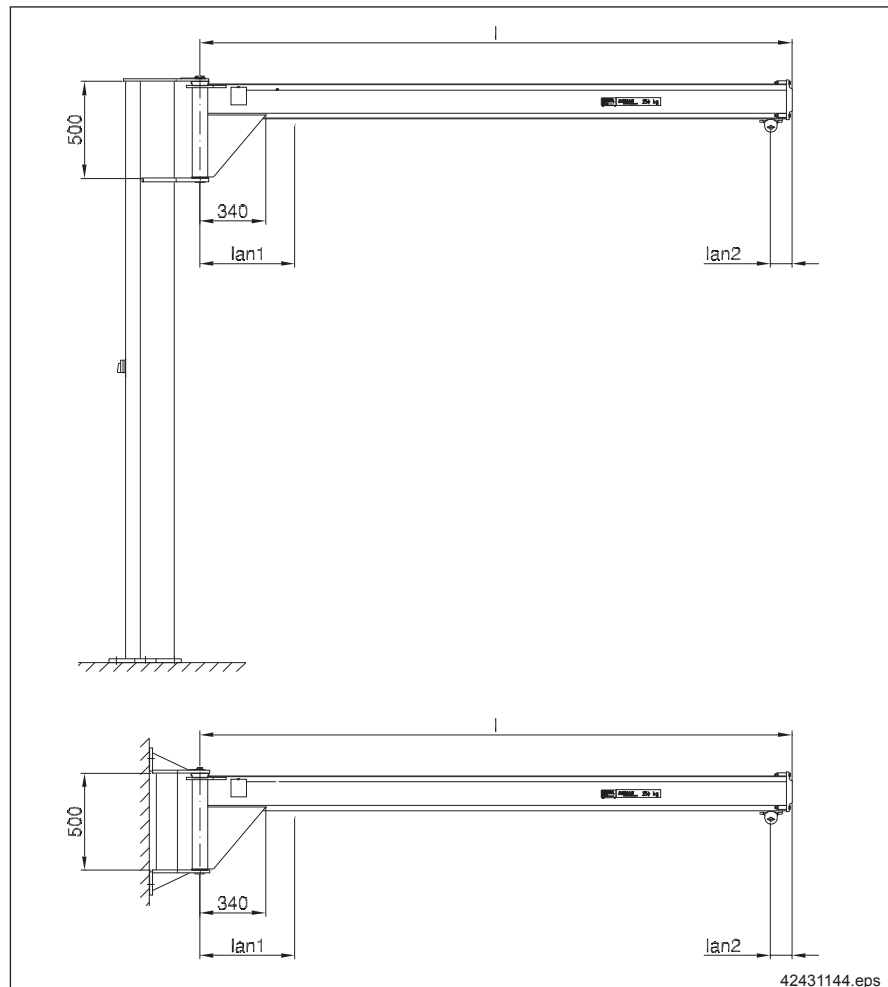
For combination 2 with KBK II jib:

- 1) 982 050 44
- 2) 982 030 44
- 3) 982 040 44

| Dimensions  | Pillar type |     |     |     |         |     |     |     |        |     |     |                   |                   |     |     |  |
|-------------|-------------|-----|-----|-----|---------|-----|-----|-----|--------|-----|-----|-------------------|-------------------|-----|-----|--|
|             | KBK I       |     |     |     | KBK I-V |     |     |     | KBK II |     |     |                   | KBK II-V          |     |     |  |
| Combination | 1           | 2   | 3   | 4   | 1       | 2   | 3   | 4   | 1      | 2   | 3   | 1                 | 1                 | 2   | 3   |  |
| a1 [mm]     | 282         | 150 | 282 | 282 | 316     | 150 | 316 | 316 | 382    | 150 | 382 | 402               | 402               | 150 | 402 |  |
| a2 [mm]     | 318         | 150 | 450 | •   | 357     | 150 | 485 | •   | 438    | 150 | 545 | 491 <sup>1)</sup> | 510 <sup>2)</sup> | 150 | 580 |  |

- 1) KBK I jib
- 2) KBK II jib

## 5 Slewing jib cranes with raised jibs



Jib with KBK II track section at top, suitable for installing on KBK I wall brackets, KBK I and KBK I-V pillars.

**The headroom is increased by 298 mm compared to standard KBK slewing jibs.**

### Technical values and combinations

| Line |     | Lifted load | Outreach | Pillar | Wall bracket | l an1 | l an2 | Jib weight |
|------|-----|-------------|----------|--------|--------------|-------|-------|------------|
| WSK  | SSK | [kg]        | [mm]     | KBK    | KBK          | [mm]  | [mm]  | [kg]       |
| 301  | 401 | 80          | 3460     | I      | I            | 600   | 110   | 79         |
| 302  | 402 |             | 3860     | I-V    |              | 600   |       | 86         |
| 303  | 403 | 100         | 2760     | I      |              | 540   | 110   | 67         |
| 304  | 404 |             | 3060     | I-V    |              | 600   |       | 72         |
| 305  | 405 | 125         | 2760     | I      |              | 540   | 110   | 67         |
| 306  | 406 |             | 3060     | I-V    |              | 600   |       | 72         |
| 307  | 407 | 160         | 2460     | I      |              | 540   | 110   | 62         |
| 308  | 408 |             | 2760     | I-V    |              | 540   |       | 67         |
| 309  | 409 | 200         | 2160     | I      |              | 490   | 110   | 57         |
| 310  | 410 |             | 2460     | I-V    |              | 540   |       | 62         |
| 311  | 411 | 250         | 1960     | I      |              | 490   | 110   | 54         |
| 312  | 412 |             | 2260     | I-V    |              | 490   |       | 59         |
| 313  | 413 | 315         | 1660     | I      |              | 490   | 110   | 49         |
| 314  | 414 |             | 1960     | I-V    |              | 490   |       | 54         |
| 315  | 415 | 400         | 1460     | I      |              | 430   | 110   | 45         |
| 316  | 416 |             | 1760     | I-V    |              | 490   |       | 50         |
| 317  | 417 | 500         | 1260     | I      |              | 430   | 110   | 42         |
| 318  | 418 |             | 1560     | I-V    |              | 430   |       | 47         |

## 6 Component parts

### 6.1 Electrical equipment

| Designation                          | SSK       | WSK        |            |
|--------------------------------------|-----------|------------|------------|
|                                      | Part no.  | Part no.   |            |
| Electrical equipment with flat cable | up to 3 m | 980 111 44 | 980 113 44 |
|                                      | > 3-5 m   | 980 112 44 | 980 114 44 |
|                                      | > 5-7 m   | 980 100 44 | 980 110 44 |

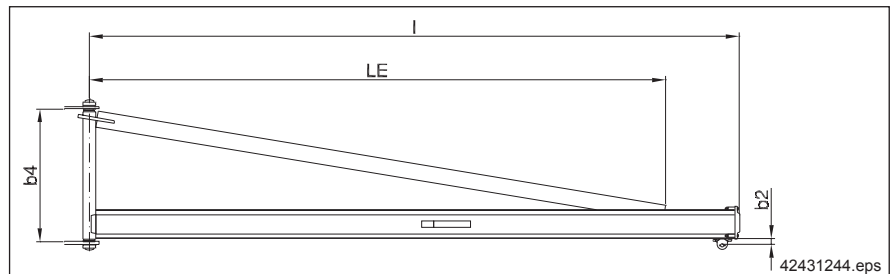
The following component parts are included:

| Designation                  | Standard<br>or<br>Part no. | Weight<br>[kg] | Quantity  |                  |                  |
|------------------------------|----------------------------|----------------|-----------|------------------|------------------|
|                              |                            |                | SSK       | WSK              |                  |
| Flat cable                   | 4G 1,5                     | 471 352 44     | 0,21 kg/m | 1) <sup>1)</sup> | 1) <sup>1)</sup> |
| Twist-type cable entry gland | M 20 Fl. Spez.             | 794 923 44     | 0,04      | 1                | 2                |
| Cable entry gland            | M 25 x 1,5                 | 343 861 44     | 0,05      | 1                | -                |
| Switch-isolator              | DT16 E                     | 473 035 44     | 0,27      | 1                | -                |
| Switch-isolator              | DT16 A                     | 575 479 44     | 0,32      | -                | 1                |
| Self-tapping screw           | FE M 4 x 16                | DIN 7513       | -         | 4                | -                |
| Hex. socket screw            | M 4 x 20                   | DIN 84         | -         | 2                | -                |
| Hex. nut                     | M 4                        | ISO 4032       | -         | 2                | -                |
| Serrated lock washer         | A 4,3                      | DIN 6798       | -         | 2                | -                |
| Cable lug                    | 4-2,5                      | DIN 46234      | -         | 2                | 2                |
| Ferrule                      | A 1,5 - 10                 | DIN 46228      | -         | 10               | 10               |
| Operating instructions       | 206 070 44                 | 0,11           | -         | 1                | 1                |

1) Supplied per metre depending on the jib length.

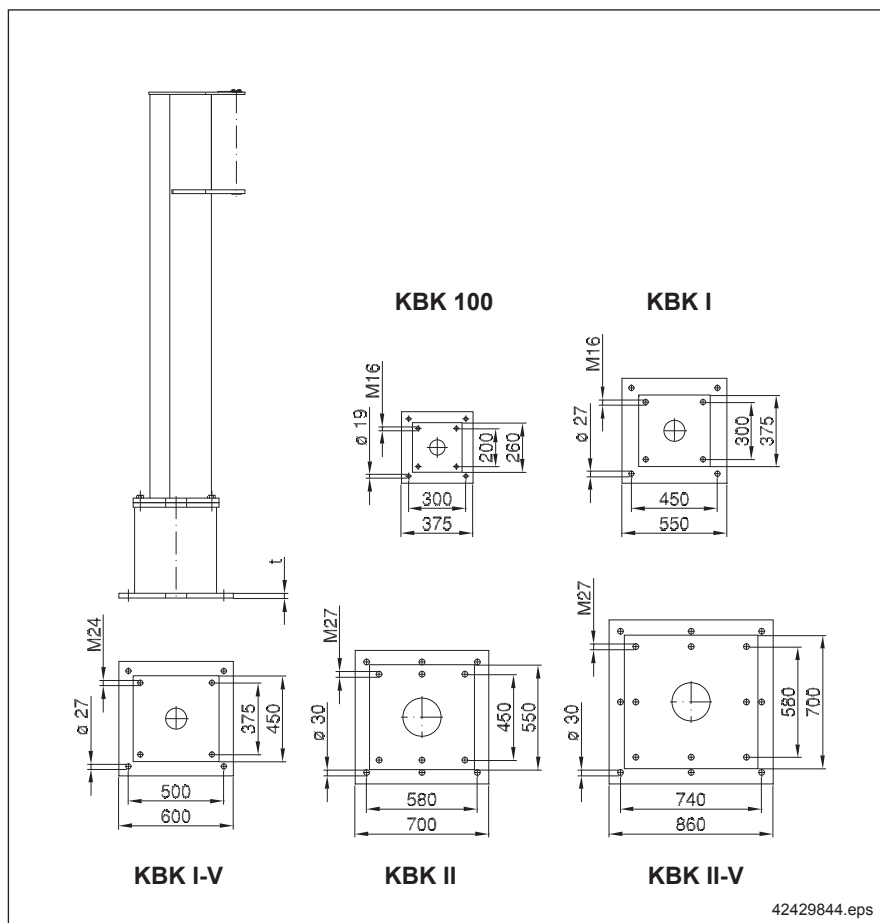
The cable with connecting elements from the switch to the power supply are not included in the scope of supply.

### 6.2 Jib



| Jib section profile<br>KBK ... | Jib<br>Part no. | Jib weight<br>ca. [kg] | l<br>[mm] | LE<br>[mm] | b2<br>[mm] | b4<br>[mm] |
|--------------------------------|-----------------|------------------------|-----------|------------|------------|------------|
| 100                            | 98456244        | 19                     | 2015      | 1740       | 40         | 350        |
|                                | 98456344        | 25                     | 3015      | 2750       | 40         |            |
| I                              | 98002044        | 40                     | 2055      | 1747       | 40         | 500        |
|                                | 98002144        | 40                     | 2055      | 1747       | 50         |            |
|                                | 98003044        | 45                     | 3055      | 2661       | 40         |            |
|                                | 98003844        | 45                     | 3055      | 2750       | 50         |            |
|                                | 98004044        | 55                     | 4055      | 3582       | 40         |            |
|                                | 98005044        | 65                     | 5055      | 4615       | 40         |            |
| I-V (II)                       | 98053044        | 85                     | 3060      | 2811       | 35         | 500        |
|                                | 98054044        | 105                    | 4060      | 2811       | 35         |            |
|                                | 98055044        | 130                    | 5060      | 4161       | 35         |            |
| II                             | 98203044        | 90                     | 3060      | 2673       | 35         | 830        |
|                                | 98204044        | 110                    | 4060      | 3597       | 35         |            |
|                                | 98205044        | 135                    | 5060      | 4491       | 35         |            |
|                                | 98253044        | 95                     | 3060      | 2673       | 50         |            |
|                                | 98254044        | 120                    | 4060      | 3597       | 50         |            |
|                                | 98255044        | 170                    | 5060      | 4754       | 50         |            |
|                                | 98256044        | 155                    | 6060      | 5182       | 35         |            |
|                                | 98257044        | 185                    | 7060      | 5716       | 35         |            |

### 6.3 Pedestal



The hook paths can be increased by using pedestals. The pedestal is selected depending on the pillar type.

| Pillar type                             | KBK  | 100  | I    | I-V | II   | II-V |
|---|------|------|------|-----|------|------|
| Max. pedestal height                    | [mm] | 1000 | 1250 |     | 1500 |      |
| Pedestal weight at max. pedestal height | [kg] | 95   | 140  | 185 | 340  | 565  |
| Factor for increased deflection         |      | 1,07 |      |     | 1,11 |      |
| Foot plate thickness t                  | [mm] | 20   | 24   | 25  | 28   | 30   |

With the same number of holes, the pedestal base plate is larger than the pillar base plate. The pedestal is supplied with bolts for securing it to the pillar. The pedestal base plate has an opening for the power supply cable.

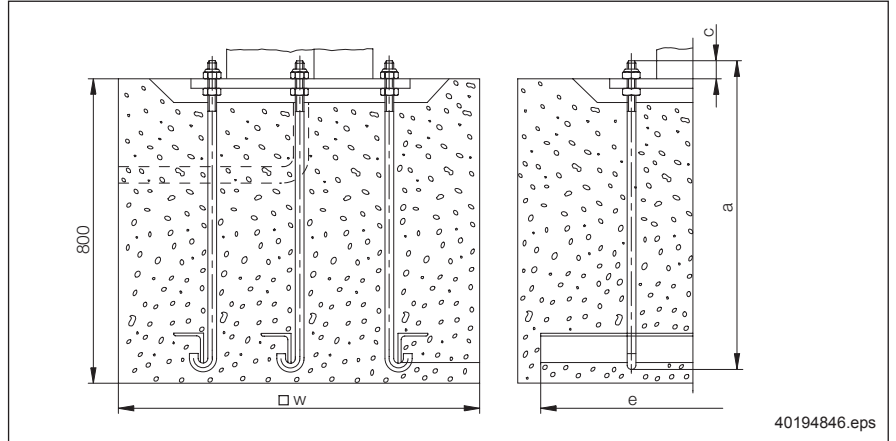
For special applications (e.g. with existing foundation), pedestals with identical base and cover plate, i.e. with identical bore hole patterns are available.



**Pay attention to the height of the mains switch when a pedestal is fitted. The switch should be fitted at approx. 1,5m height.**

## 6.4 Floor fittings

### Anchor bolt set, template



An anchor bolt set consists of angle sections and anchor bolts (min. quality 5.6), and nuts. Sheet steel template for anchor bolt alignment.

For dimension  $w$  please refer to the table in chapter 3.

Foundation preparation work may only be carried out by expert companies.

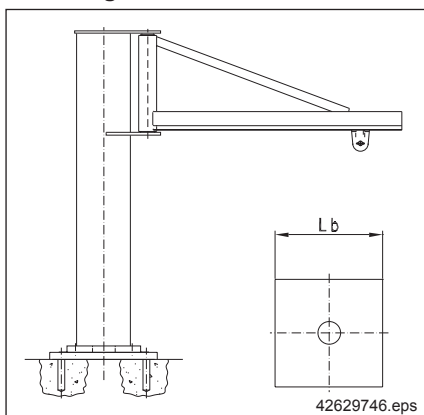
Additional reinforcement is not necessary.

The bolted connections and the crane base must remain permanently accessible for inspections. Undergrout the crane base flange after completion of erection.

| Pillar type     | Anchorage  |             |            |             | Template   |             |            |             |
|-----------------|------------|-------------|------------|-------------|------------|-------------|------------|-------------|
|                 | Pillar     |             | Pedestal   |             | Pillar     |             | Pedestal   |             |
|                 | Part no.   | Weight [kg] | Part no.   | Weight [kg] | Part no.   | Weight [kg] | Part no.   | Weight [kg] |
| <b>KBK 100</b>  | 980 069 44 | 11          | 980 069 44 | 11          | 984 071 44 | 1,5         | 980 071 44 | 3,3         |
| <b>KBK I</b>    |            |             | 980 169 44 | 28          | 980 071 44 | 3,3         | 980 188 44 | 7,0         |
| <b>KBK I-V</b>  | 980 171 44 | 4,7         |            |             | 980 189 44 | 8,4         |            |             |
| <b>KBK II</b>   | 982 069 44 | 34          | 982 164 44 | 61          | 982 071 44 | 7,0         | 982 188 44 | 11,4        |
| <b>KBK II-V</b> | 982 169 44 | 85          | 982 169 44 | 85          | 982 171 44 | 11,4        | 982 189 44 | 17,3        |

| Anchorage  | a    | c    | Anchor | e    | Binding beam |
|------------|------|------|--------|------|--------------|
| Part no.   | [mm] | [mm] |        | [mm] |              |
| 980 069 44 | 560  | 35   | M 16   | 600  | L 60 x 6     |
| 980 169 44 | 800  | 50   | M 24   | 850  | L 80 x 8     |
| 982 069 44 |      |      |        |      |              |
| 982 164 44 | 825  | 55   | M 27   | 1030 | L 80 x 10    |
| 982 169 44 |      |      |        |      |              |

### Anchorage

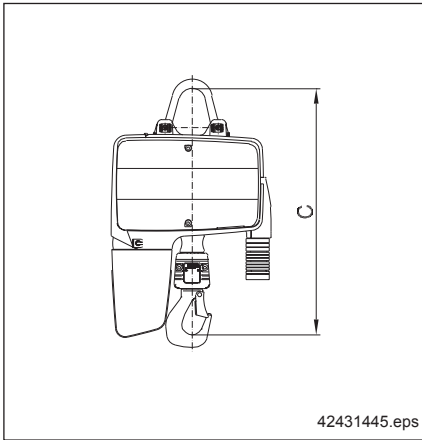


Intermediate plates and special anchor bolts approved for dynamic loads are used for floor fitting.

For further information see technical data sheet Anchor bolts for KBK installations, ident. no. 203 276 44.

| Anchor bolt type | Concrete thickness [mm] | □ L b        |            |              |             |               |
|------------------|-------------------------|--------------|------------|--------------|-------------|---------------|
|                  |                         | KBK 100 [mm] | KBK I [mm] | KBK I-V [mm] | KBK II [mm] | KBK II-V [mm] |
| Upat             | 200                     | 350          | 550        | 870          | 1100        | 1530          |
|                  | 250                     | 350          | 550        | 800          | 1000        | 1300          |
| Hilti            | 200                     | 450          | 650        | 1150         | 1150        | 1450          |
|                  | 250                     | 450          | 550        | 800          | 1000        | 1300          |

## 6.5 Hoists

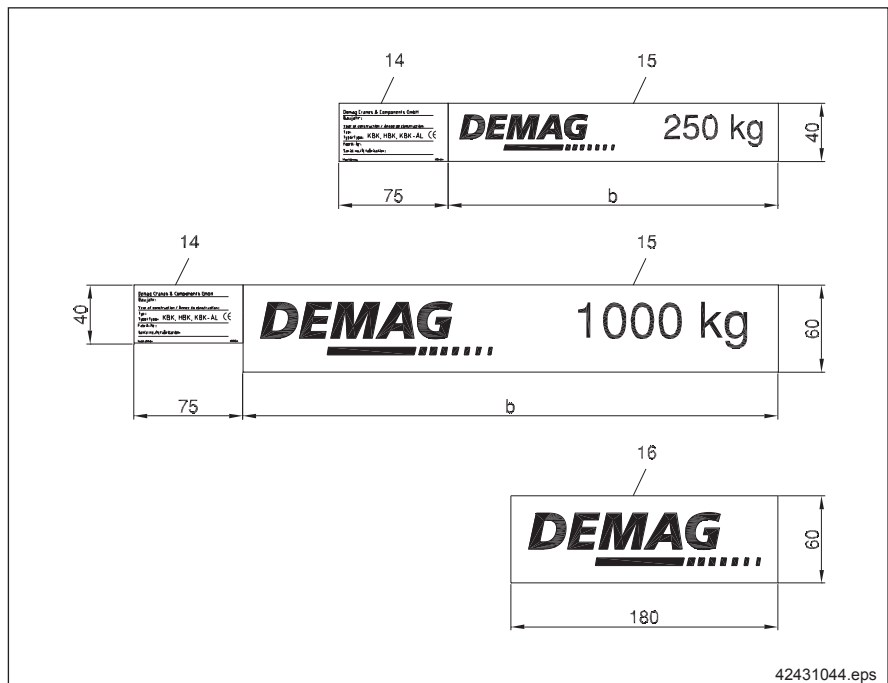


| SWL<br>up to ... [kg] | Max. adm. hoist<br>weight<br>[kg] | Chain hoist<br>Type | Hook dim. C<br>1)<br>[mm] | Lifting speed<br>[m/min at 50 Hz] | Max. Weight<br>[kg]<br>at hook path |     |
|-----------------------|-----------------------------------|---------------------|---------------------------|-----------------------------------|-------------------------------------|-----|
|                       |                                   |                     |                           |                                   | 5 m                                 | 8 m |
| 125                   | 25                                | DC 1- ... V1        | 343                       | 8,0/2,0                           | 22                                  | 24  |
|                       |                                   | DC 2- ... V2        |                           | 16,0/2,0                          |                                     |     |
| 250                   | 35                                | DC 2- ... V1        | 388                       | 8,0/2,0                           | 28                                  | 30  |
|                       |                                   | DC 5- ... V2        |                           | 12,0/3,0                          |                                     |     |
| 500                   | 65                                | DC 5- ... V1        | 493                       | 6,0/1,5                           | 48                                  | 52  |
|                       |                                   | DC 10- ... V2       |                           | 12,0/3,0                          |                                     |     |
| 1000                  | 75                                | DC 10- ... V1       | 580                       | 6,0/1,5                           | 56                                  | 60  |
|                       |                                   | DC 20- ... V2       |                           | 12,0/3,0                          |                                     |     |

1) With long suspension eye. On single trolleys the short suspension eye can also be used.

For further hoists see brochure 203 525 44 (DC-Pro), 203 571 44 (DC-Com) and 202 846 44 (DKUN).

## 6.6 Manufacturer's plate and load capacity plate



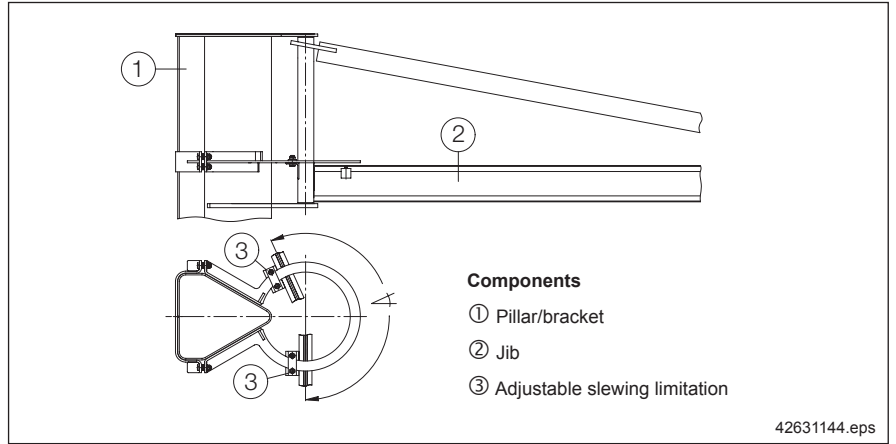
| Part no. |                      | SWL  | Size 40 high | Part no.   | Size 60 high | Part no.   |
|----------|----------------------|------|--------------|------------|--------------|------------|
|          |                      | [kg] | b [mm]       |            | b [mm]       |            |
| 14       | Manufacturer's plate | -    | 75           | 980 149 44 | 75           | 980 149 44 |
| 15       | Capacity plate       | 80   | 211          | 980 139 44 | -            | -          |
|          |                      | 100  | 227          | 980 146 44 | -            | -          |
|          |                      | 125  | 227          | 980 140 44 | -            | -          |
|          |                      | 160  | 227          | 980 750 44 | -            | -          |
|          |                      | 200  | 227          | 980 751 44 | -            | -          |
|          |                      | 250  | 227          | 980 141 44 | 344          | 850 286 44 |
|          |                      | 315  | 227          | 980 752 44 | -            | -          |
|          |                      | 400  | 227          | 980 753 44 | -            | -          |
|          |                      | 500  | 227          | 980 142 44 | 344          | 850 287 44 |
|          |                      | 630  | 227          | 980 754 44 | 344          | 850 288 44 |
| 16       | Demag logo           | -    | -            | -          | 180          | 850 150 44 |
|          |                      | -    | -            | -          | 180          | 850 150 44 |

# 7 Options

## 7.1 Slewing limitation

On request, an adjustable slewing limitation is available to limit the slewing range of the jib.

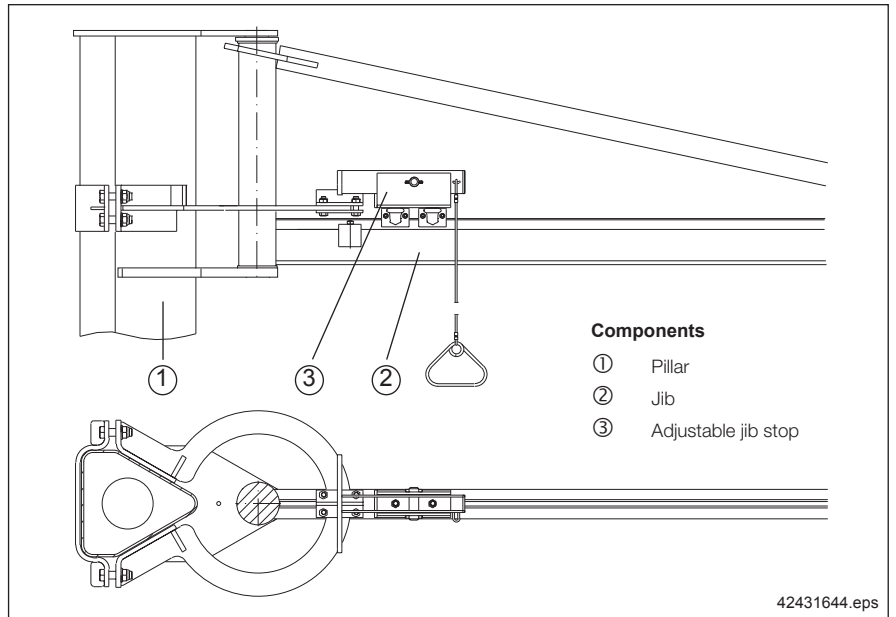
**Example:**



## 7.2 Jib stop

The adjustable stop is used for securing the jib in a position.

**Example:**



**Note**

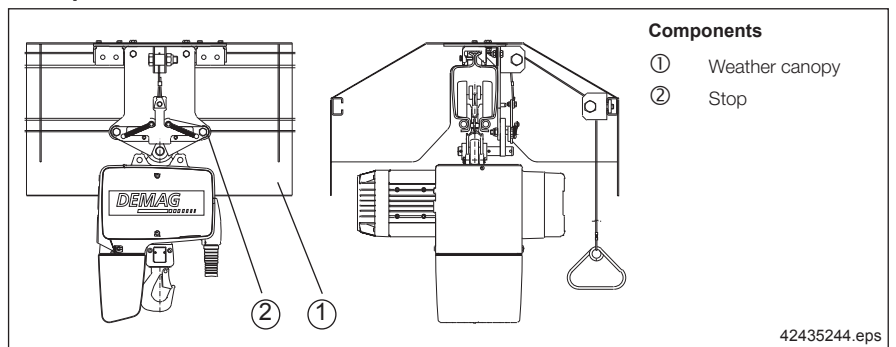


A combination of slewing limitation and jib stop is possible.  
**Further information available on request.**

## 7.3 Weather canopy

The weather canopy is recommended for outdoor operation. Upon request, it can be provided with a stop for the trolley.

**Example:**



**Demag Cranes & Components GmbH**

Handling Technology

P.O. Box 67 · D-58286 Wetter

Telephone (+49 2335) 92-0

Telefax (+49 2335) 922406

E-mail [handling@demagcranes.com](mailto:handling@demagcranes.com)

[www.demagcranes.de](http://www.demagcranes.de)